



NATIONAL DEFENSE RESEARCH INSTITUTE

THE ARTS
CHILD POLICY
CIVIL JUSTICE
EDUCATION
ENERGY AND ENVIRONMENT
HEALTH AND HEALTH CARE
INTERNATIONAL AFFAIRS
NATIONAL SECURITY
POPULATION AND AGING
PUBLIC SAFETY
SCIENCE AND TECHNOLOGY
SUBSTANCE ABUSE
TERRORISM AND
HOMELAND SECURITY
TRANSPORTATION AND
INFRASTRUCTURE
WORKFORCE AND WORKPLACE

This PDF document was made available from www.rand.org as a public service of the RAND Corporation.

[Jump down to document](#) ▼

The RAND Corporation is a nonprofit research organization providing objective analysis and effective solutions that address the challenges facing the public and private sectors around the world.

Support RAND

[Purchase this document](#)

[Browse Books & Publications](#)

[Make a charitable contribution](#)

For More Information

Visit RAND at www.rand.org

Explore the [RAND National Defense Research Institute](#)

View [document details](#)

Limited Electronic Distribution Rights

This document and trademark(s) contained herein are protected by law as indicated in a notice appearing later in this work. This electronic representation of RAND intellectual property is provided for non-commercial use only. Unauthorized posting of RAND PDFs to a non-RAND Web site is prohibited. RAND PDFs are protected under copyright law. Permission is required from RAND to reproduce, or reuse in another form, any of our research documents for commercial use. For information on reprint and linking permissions, please see [RAND Permissions](#).

This product is part of the RAND Corporation monograph series. RAND monographs present major research findings that address the challenges facing the public and private sectors. All RAND monographs undergo rigorous peer review to ensure high standards for research quality and objectivity.

ERRATA

To: Recipients of MG-873-OSD, *How Have Deployments During the War on Terrorism Affected Reenlistment?* (2009)

From: RAND Corporation Publications Department

Dates: July 2010 and April 2011

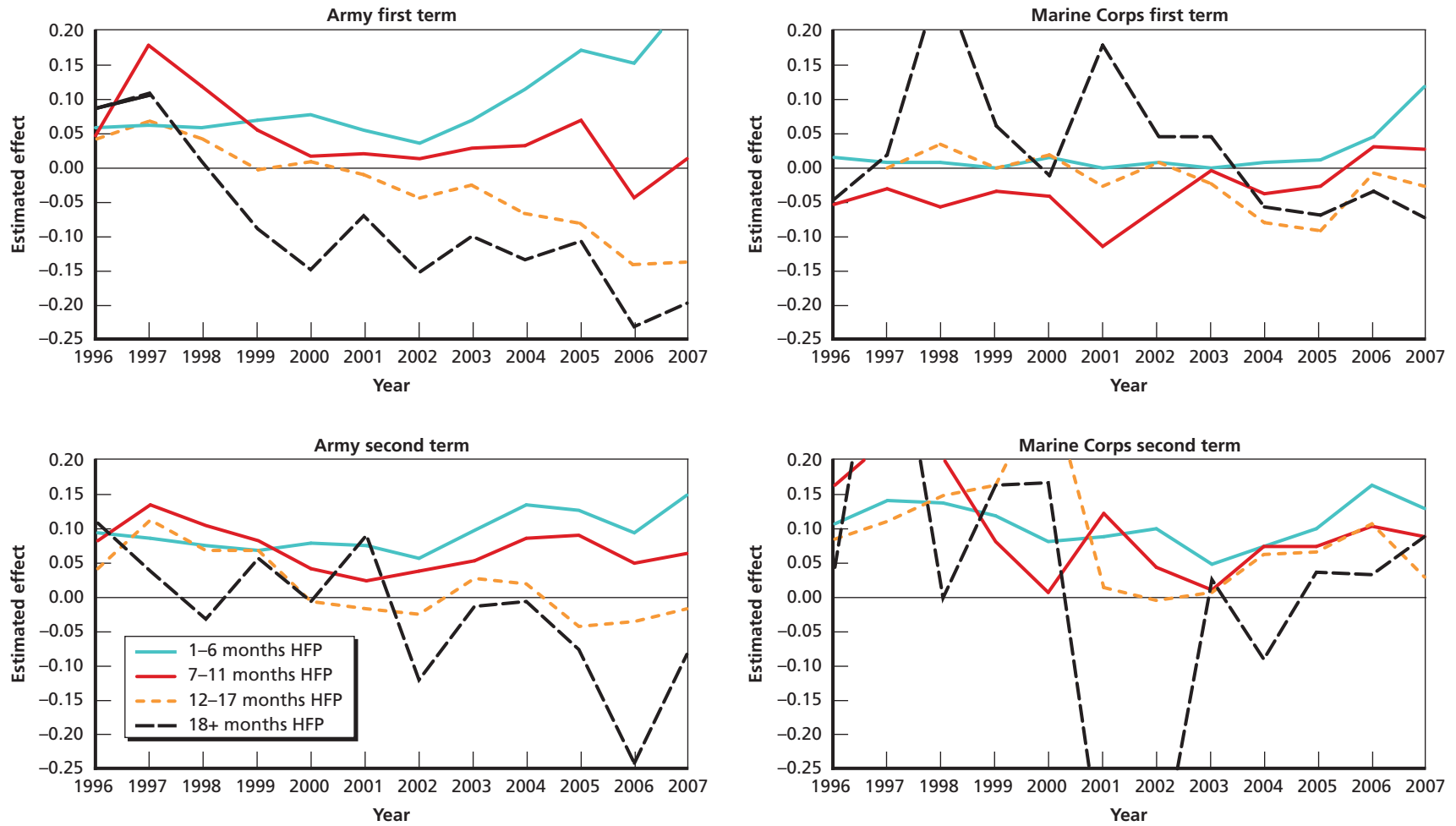
Re: Corrected pages (pp. 50 and 124)

On page 50, in the key for Figure 7.2, the lines associated with 7–11 months of hostile-fire pay and 12–17 months of hostile-fire pay were reversed. In the four panels of the figure, the solid red line represents 7–11 months; the dashed orange line represents 12–17 months. This change does not affect the research findings in the monograph.

On page 124, Table C.35, the data on the effect of months of deployment in the prior three years on reenlistment in the Army were incorrect. This change does not reflect the general conclusions about the effects or the research findings in the monograph.

We regret the inconvenience.

Figure 7.2
Hostile Deployment Effect by Months Deployed in 36 Months Preceding Reenlistment Decision, Army and Marine Corps



RAND MG873-7.2

Table C.35
Effect of Months of Deployment in Prior Three Years on Reenlistment, by Year of Decision, Army

Year of Decision	First Term				Second Term			
	1-6 Months	7-11 Months	12-17 Months	18+ Months	1-6 Months	7-11 Months	12-17 Months	18+ Months
1996	0.058** (0.006)	0.047** (0.016)	0.041 (0.049)	0.087 (0.076)	0.094** (0.006)	0.082** (0.015)	0.040 (0.031)	0.109+ (0.059)
1997	0.061** (0.007)	0.176** (0.011)	0.070** (0.029)	0.107 (0.119)	0.086** (0.007)	0.132** (0.011)	0.110** (0.026)	0.037 (0.064)
1998	0.058** (0.008)	0.117** (0.011)	0.041 (0.025)	0.007 (0.097)	0.075** (0.009)	0.105** (0.012)	0.067** (0.029)	-0.033 (0.069)
1999	0.068** (0.007)	0.053** (0.009)	-0.002 (0.026)	-0.089 (0.068)	0.066** (0.009)	0.081** (0.012)	0.067** (0.025)	0.054 (0.062)
2000	0.077** (0.007)	0.016+ (0.009)	0.009 (0.032)	-0.148* (0.075)	0.077** (0.009)	0.043** (0.013)	-0.005 (0.033)	-0.008 (0.071)
2001	0.052** (0.006)	0.020** (0.008)	-0.009 (0.025)	-0.070 (0.093)	0.075** (0.008)	0.024* (0.012)	-0.019 (0.030)	0.089 (0.112)
2002	0.037** (0.007)	0.013 (0.009)	-0.046* (0.023)	-0.154* (0.076)	0.058** (0.009)	0.036** (0.013)	-0.025 (0.031)	-0.119 (0.088)
2003	0.068** (0.007)	0.026** (0.008)	-0.026* (0.013)	-0.099** (0.031)	0.097** (0.010)	0.052** (0.013)	0.026 (0.023)	-0.014 (0.073)
2004	0.115** (0.008)	0.030** (0.007)	-0.067** (0.008)	-0.134** (0.018)	0.134** (0.011)	0.087** (0.011)	0.018 (0.012)	-0.005 (0.035)
2005	0.168** (0.010)	0.070** (0.009)	-0.079** (0.008)	-0.108** (0.012)	0.128** (0.010)	0.089** (0.010)	-0.044** (0.010)	-0.076** (0.018)
2006	0.152** (0.012)	-0.044** (0.010)	-0.140** (0.008)	-0.231** (0.009)	0.094** (0.011)	0.049** (0.011)	-0.035** (0.010)	-0.243** (0.014)
2007	0.244** (0.013)	0.013 (0.012)	-0.138** (0.010)	-0.199** (0.013)	0.147** (0.013)	0.062** (0.013)	-0.018 (0.013)	-0.083** (0.018)

NOTE: Models include controls for nonhostile deployment only in window, years of service at the time of the decision, education, gender, AFQT, race, and an indicator for being promoted more rapidly than is typical.

** = statistically significant at the 1-percent level. * = statistically significant at the 5-percent level.