



# LABOR AND POPULATION

- THE ARTS
- CHILD POLICY
- CIVIL JUSTICE
- EDUCATION
- ENERGY AND ENVIRONMENT
- HEALTH AND HEALTH CARE
- INTERNATIONAL AFFAIRS
- NATIONAL SECURITY
- POPULATION AND AGING
- PUBLIC SAFETY
- SCIENCE AND TECHNOLOGY
- SUBSTANCE ABUSE
- TERRORISM AND HOMELAND SECURITY
- TRANSPORTATION AND INFRASTRUCTURE
- WORKFORCE AND WORKPLACE

This PDF document was made available from [www.rand.org](http://www.rand.org) as a public service of the RAND Corporation.

[Jump down to document](#) ▼

The RAND Corporation is a nonprofit research organization providing objective analysis and effective solutions that address the challenges facing the public and private sectors around the world.

## Support RAND

[Browse Books & Publications](#)

[Make a charitable contribution](#)

## For More Information

Visit RAND at [www.rand.org](http://www.rand.org)

Explore [RAND Labor and Population](#)

View [document details](#)

This product is part of the RAND Corporation reprint series. RAND reprints reproduce previously published journal articles and book chapters with the permission of the publisher. RAND reprints have been formally reviewed in accordance with the publisher's editorial policy.

# **“Socioeconomic Differences in the Adoption of New Medical Technologies”**

Dana Goldman and James P. Smith\*

New medical technologies hold tremendous promise for improving population health, but they also raise concerns about exacerbating already large differences in health by socioeconomic status (SES) (James P. Smith, 1999). In prior work, we found that better self-management of disease by the more educated was a critical factor in maintaining the SES health gradient for two distinct diseases—diabetes and HIV (Dana Goldman and James P. Smith, 2002). For these diseases—both characterized by the introduction of new effective treatment technologies—differences by education in patient adherence to prescribed treatment explained a significant component of the health gradient.

The impact of a new technology on health disparities depends not only on how difficult it is to adhere, but also on who actually receives the treatment. If effective technologies are more rapidly adopted by the better educated, SES health disparities may initially expand even though the health of those in the lowest SES groups eventually improves.

Hypertension provides a useful example. It is a major risk factor for cardiovascular disease and a relatively common condition—in 2002, 21% of those 18 and older had the disease, and the prevalence grows rapidly with age (over 50% among those 65 and over). There also is a gradient with schooling—29% prevalence among those with less than a high school diploma compared to only 19% for those with a bachelor’s degree or more.<sup>1</sup> Before the introduction of effective drugs, the recommended treatment consisted of some combination of exercise and diet, particularly to reduce excessive weight and salt. But as a consequence of positive results from clinical trials, starting in the early 1970s, a sequence of very effective drug treatments has been introduced.

In this paper, we examine the short and long-term diffusion of anti-hypertensive therapy and how that diffusion varies by a key SES marker—education. Our investigation begins with the Framingham Heart Study (FHS), which has contributed much of the epidemiological knowledge about cardiovascular disease and its risk factors. Initiated in 1948, the FHS enrolled 5,209 white men and women aged 28 to 62

from Framingham, Massachusetts. Framingham is well suited to our analysis as it begins with a cohort free of cardiovascular disease in 1948 and follows them for over 50 years, tracking their health status with biennial medical examinations. Systolic and diastolic blood pressure are measured three times at each examination, and a physician performs a comprehensive medical examination. Patients are also asked to list all medications they are taking with the list of medications changing over time as new drugs enter the market.<sup>2</sup> As the original cohort progressed, many FHS participants developed hypertension and initiated drug treatment.

Table 1 documents patterns of diffusion of anti-hypertensive therapies among diagnosed hypertensives in FHS, including diuretics, beta-blockers, calcium channel blockers, and ACE inhibitors. In 1978, less than half of FHS hypertensives were taking any drug at all and virtually all these drugs were in the diuretic class. Clinical evidence was first provided for the efficacy of diuretics in the late 1960's and early 1970's.

The data in Table 1 inform us that the use of drugs to treat hypertension has grown rapidly over these sixteen years and is no doubt a key factor contributing to the substantial decline in heart disease risk and mortality. This expansion partly reflects the increased use of existing drugs, but also the adoption of a series of new drug innovations hitting the market. Following FDA approval for hypertension in 1976, beta-blockers were introduced into widespread clinical practice; by 1978, 10% of the Framingham hypertensives were using the drug. Usage rate doubled over the next four years and plateaued around 30% by the late 1980s. FHS first asked about calcium channel blockers in 1982, but their use received a big boost when they were recommended by a national panel of experts in 1988 as an option for first line therapy (JNC IV, 1988). Finally, ACE inhibitors first appear in the FHS in 1986 and were quickly adopted in the late 1980s and early 1990s. These last two drugs in particular appear to both expand overall drug use but also to substitute to some extent for older antihypertensives.

Our principal question concerns the relative speed of adoption of these new drug therapies of people with different education levels. These patterns are described in Table 2. Is it the case that more educated patients adopt new drugs at a more rapid rate? The two most interesting drugs for our purposes

are calcium channel blockers and ACE inhibitors, since we can observe the full adoption paths. For neither of them do there appear to be any systematic differences by schooling in the speed of adoption.

As a more formal test, using the FHS we estimated linear regression models for the use of each drug where the covariates included age, gender, marital status, the education classes used in Table 2, mean cholesterol levels in the exam, blood sugar level, whether the person was obese or overweight, and a quadratic time trend. This quadratic time trend was interacted with the education dummies to see if the speed of diffusion varied by schooling level. The p-values for the F tests for differences across education groups were 0.87 (ACE inhibitors), 0.37 (calcium channel blockers), 0.38 (beta-blockers), 0.04 (diuretics), and 0.39 (taking any drug). The only statistically significant effect was obtained for diuretics, and in that case the least educated were more likely to be taking the drug.

Framingham may be unique for several reasons. It is a closed, aging cohort that represents one relatively homogenous New England town (for example no racial minorities). Moreover, doctors rather than patients may drive the adoption process, and doctors in this mid-size town may have simply recommended the same drug therapy regimen to all their patients regardless of their education. Even though a relationship of SES and adoption may not exist in Framingham or any other specific place, an aggregate relation could emerge if communities whose average SES levels are higher than average adopt new medical technologies more quickly (perhaps due to the type of doctors who work there).

To test this hypothesis, we turn to the National Ambulatory Medical Care Survey (NAMCS), a nationally representative study of ambulatory care in physicians' offices. Each year 3,000 physicians are randomly selected to provide data on approximately 30 patient visits over a 1-week period. Data are obtained on patients' symptoms, physicians' diagnoses, and medications ordered or provided. Since there is no information on individual patients' SES, we use area-specific mean education to detect whether adoption was faster in high SES locales. Geography is coarse in NAMCS so we are limited to the four census regions and within regions to whether it is a MSA or not. Since drug data are only available starting in 1980 and we want to track the full diffusion, we focus on calcium channel blockers and ACE inhibitors used by diagnosed hypertensives.

Figures 1.a and 1.b plot the diffusion of calcium channel blockers and ACE inhibitors for the four census regions. For both drugs, there exists a remarkable similarity in the speed of adoption across geography. To provide a more formal test, we estimated a model predicting the use of each drug by year on a quadratic time trend and region-urban dummies with interactions of that quadratic with each of the eight sub-regions (the four Census regions subdivided into its MSA and non-MSA components). The p values for the F-tests of no statistically significant differences in trends across these sub-regions was  $p=0.57$  for calcium channel blockers and  $p=0.11$  for ACE inhibitors. Subject to the broad level of geographic aggregation forced by available data, we find no evidence of any relationship between the area specific levels of education and the speed of diffusion of hypertensive drugs.

Finally, we turn our attention to a nationally representative sample of hypertensives from the third wave of the National Health and Nutrition Examination Survey (NHANES III) fielded between 1988 and 1994. NHANES III contains data obtained through personal interviews and physical exams for 33,994 people two months and older. Information is available on the prevalence of a wide variety of illnesses including hypertension, specific types of drugs taken, and individual characteristics including age, gender, race, marital status, household income and education. Besides the four Census regions and an urban rural distinction within each region, one can identify 35 separate large counties. For each of these 43 identified areas, we computed mean education levels of those 25-64 years old from the 1990 Census and matched it to the NHANES III files. Although individual years cannot be identified, the data are separated into two nationally representative phrases (1988-1991 and 1991-1994).

We estimated models predicting the use of calcium channel blockers and ACE inhibitors for people with hypertension. These models included measures of the demographic variables listed above, health co-morbidities (serum cholesterol, serum glucose, diabetes, arthritis, bronchitis, asthma, cancer, and heart disease) and health behaviors (smoking). For our purpose, the critical variables are household income and individual education (classified as not a high school graduate, high school grad, and more than high school). Household income was never statistically significant, and the p-values for the F-tests for education were 0.65 for channel beta-blockers and 0.45 for ACE inhibitors. The results for these SES

variables did not change if we limited the sample to those hypertensives taking medication or to the first phase of NHANES III (spanning 1988 to 1991 only). These models also included mean level of education in the identifiable areas. In no case was area-specific, mean education levels related to the adoption of any of the drugs, providing additional evidence that a relationship between education and adoption emerges as more educated areas adopted more quickly.

## **Conclusions**

The reasons for the very large difference in health outcomes by several measures of SES are being vigorously debated anew within and outside economics (Smith, 2005). In this paper, we investigated one possible reason for the health gradient—that novel and effective medical technologies are adopted more quickly by those with higher SES, giving them at least a temporary advantage in improved health. We test this hypothesis by examining the introduction of new drugs to treat hypertension, of which there have been several important examples over the last twenty-five years. However, using three prominent medical surveys we find no evidence that the diffusion of these drugs into medical treatment favored one education group relative to another. This suggests that at least for hypertension, a key risk factor for heart disease, the SES differences in the adoption of new medical technologies are not an important reason for the SES health gradient.

There are several caveats to our conclusions. We have only analyzed a single medical condition, one where the short-term medical risks are not great, the recommended drug therapies not particularly expensive, and where the therapeutic efficacy of some of the new drug innovations has been questioned *ex post*. Whether our findings reported here extend to other diseases, especially those that are more severe and/or more expensive to treat so that people with higher incomes may have an extra advantage, must await additional research by others and us.

Table 1  
 Fraction of Hypertensives Taking Antihypertensives by Year

Exam Year	Any Drug	Diuretics	Beta Blockers	Calcium	ACE inhibitors
1978	0.49	0.45	0.10		
1980	0.53	0.48	0.13		
1982	0.56	0.49	0.20	0.01	
1984	0.61	0.50	0.26	0.03	
1986	0.64	0.49	0.24	0.06	0.05
1988	0.83	0.52	0.30	0.17	0.15
1990	0.86	0.46	0.30	0.22	0.22
1992	0.88	0.45	0.32	0.35	0.31
1994	0.85	0.38	0.31	0.32	0.33

Source- Framingham Heart Study

Table 2  
Education Gradient in Antihypertensive Drug Use

Any Drug									
Education	1978	1980	1982	1984	1986	1988	1990	1992	1994
8 or less	0.50	0.55	0.59	0.65	0.70	0.87	0.87	0.93	0.87
Some HS	0.50	0.54	0.57	0.59	0.65	0.84	0.93	0.87	0.85
HS degree/SC	0.48	0.52	0.56	0.60	0.63	0.82	0.84	0.86	0.85
College degree	0.46	0.52	0.54	0.59	0.60	0.85	0.87	0.86	0.87

Diuretics									
Education	1978	1980	1982	1984	1986	1988	1990	1992	1994
8 or less	0.47	0.51	0.54	0.56	0.55	0.58	0.47	0.51	0.43
Some HS	0.46	0.49	0.48	0.44	0.51	0.50	0.44	0.47	0.40
HS degree/SC	0.46	0.47	0.47	0.47	0.46	0.47	0.42	0.42	0.35
College degree	0.42	0.46	0.45	0.48	0.45	0.55	0.52	0.44	0.39

Beta Blockers									
Education	1978	1980	1982	1984	1986	1988	1990	1992	1994
8 or less	0.09	0.10	0.19	0.25	0.24	0.27	0.31	0.36	0.35
Some HS	0.09	0.10	0.17	0.22	0.21	0.28	0.30	0.31	0.35
HS degree/SC	0.10	0.15	0.21	0.28	0.27	0.32	0.32	0.31	0.28
College degree	0.11	0.13	0.20	0.28	0.23	0.30	0.26	0.29	0.32

Calcium									
Education	1978	1980	1982	1984	1986	1988	1990	1992	1994
8 or less			0.01	0.04	0.06	0.15	0.21	0.30	0.28
Some HS			0.03	0.05	0.10	0.22	0.34	0.40	0.37
HS degree/SC			0.01	0.03	0.07	0.19	0.22	0.29	0.36
College degree			0.00	0.02	0.03	0.10	0.16	0.30	0.23

Ace Inhibitors									
Education	1978	1980	1982	1984	1986	1988	1990	1992	1994
8 or less					0.05	0.14	0.22	0.27	0.33
Some HS					0.02	0.09	0.17	0.17	0.25
HS degree/SC					0.05	0.17	0.23	0.28	0.34
College degree					0.05	0.16	0.26	0.29	0.37

Source- Framingham Heart Study



Fig. 1A Use of Calcium Channel Blockers by Region

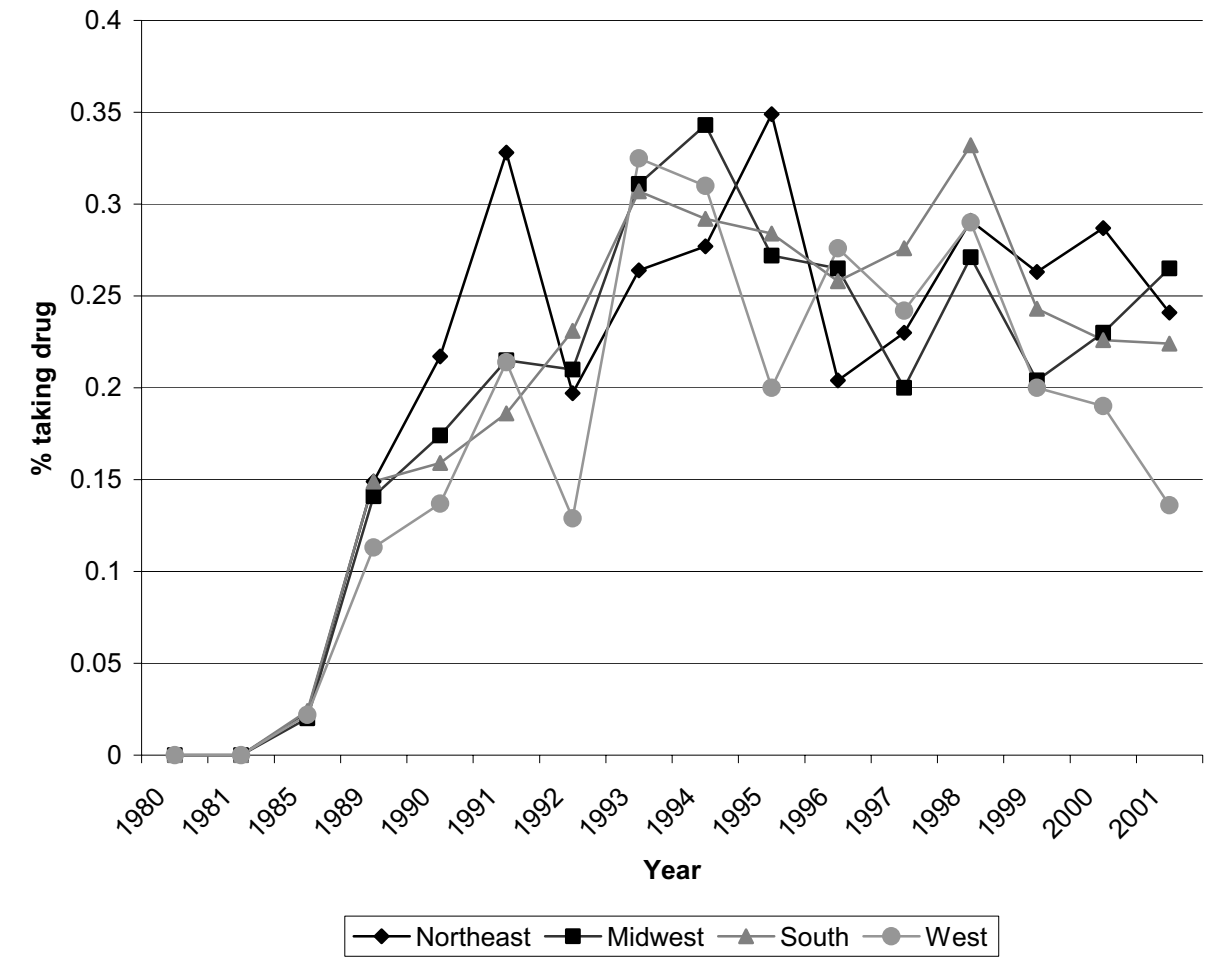
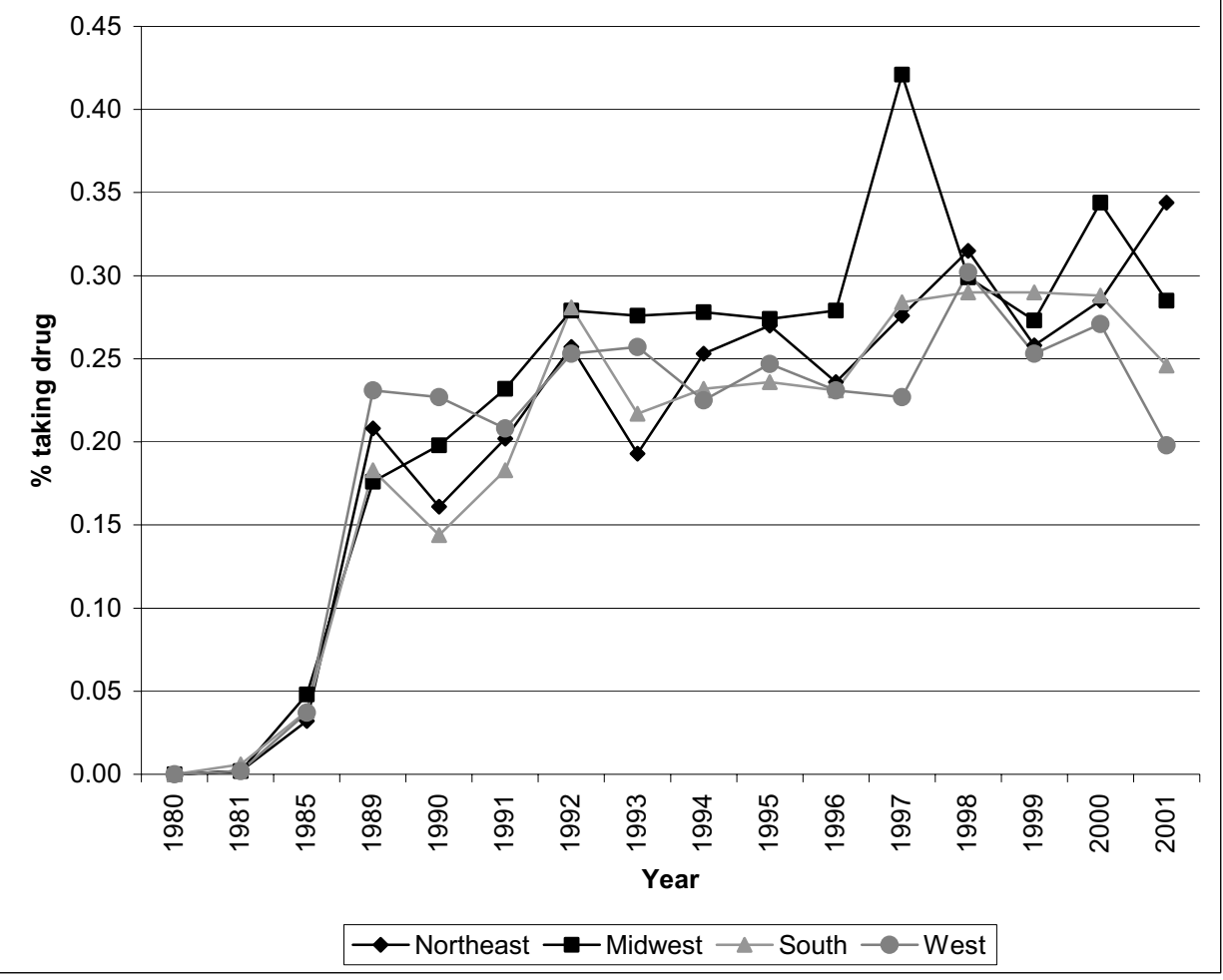


Fig 1B Use of ACE Inhibitors by Region



## References

- Goldman, Dana, and Smith James P. "Can Patient Self-Management Help Explain the SES Health Gradient?" Proceedings of the National Academy of Sciences; USA (PNAS), August 6,2002 99(16): pp. 10929-10934.
- Joint National Committee. "The 1988 Report of the Joint National Committee on Detection, Evaluation, and Treatment of High Blood Pressure." Archives of Internal Medicine, 1988 148: pp.1023–1038.
- Smith James P. "Healthy Bodies and Thick Wallets," Journal of Economic Perspectives, 1999 13(2) pp.145-166.
- \_\_\_\_\_. "Unraveling the SES Health Connection," Population and Development Review, Spring 2005 forthcoming.

## Endnotes

\* Goldman and Smith are Senior Economists at RAND, 1776 Main Street, Santa Monica Ca. 90407. The expert programming assistance of Abby Albert and Patty St. Clair is gratefully acknowledged. This research was supported by a grant from NIA.

<sup>1</sup> All data are from National Center for Health Statistics Stat 10 (222) 2004, see Table 2.

<sup>2</sup> Prior to Exam 14 the FHS did not contain any specific class of anti-hypertensives drugs other than diuretics. Starting with Exam 14, the FHS added propranolol, the earliest beta-blocker. Eventually, FHS added calcium channel blockers and one ACE inhibitor, as well as beta-blockers as a class.

**RAND**  
**1776 Main Street, Santa Monica, CA 90407**  
***Labor and Population Reprint Series***

**2005**

<u>Series Number</u>	<u>Order Number</u>	<u>Title</u>	<u>Author</u>
05-05	RP-1199	<i>Socioeconomic Differences in the Adoption of New Medical Technologies</i> [In <u>The American Economic Review</u> , Vol. 95, No. 2, pp. 234-237, May 2005]	Dana Goldman James P. Smith
05-04	RP-1195	<i>Demographics and Security: The Contrasting Cases of Pakistan and Bangladesh</i> [In <u>Journal of South Asian and Middle Eastern Studies</u> , Vol. XXVII, No. 4, Summer 2005, pp. 53-76.]	C. Christine Fair Clifford Grammich Julie DaVanzo Brian Nichiporuk
05-03	RP-1170	<i>Unraveling the SES-Health Connection</i> [in <u>Aging, Health, and Public Policy: Demographic and Economic Perspectives</u> , a supplement to <u>Population and Development Review</u> Vol. 30, 2005, pp.108-132.]	James P. Smith
05-02	RP-1154	<i>Immigration Status and Health Insurance Coverage: Who Gains? Who Loses?</i> [in <u>American Journal of Public Health</u> , Vol. 95, 2005, pp. 865-886.]	Julia C. Prentice Anne R. Pebley Narayan Sastry
05-01	RP-1152	<i>A Stock-Flow Analysis of the Welfare Caseload</i> [in <u>Journal of Human Resources</u> , Vol. 39, No. 4, Fall 2004, pp. 49-70.]	Jacob Alex Klerman Steven Haider

**2004**

<u>Series Number</u>	<u>Order Number</u>	<u>Title</u>	<u>Author</u>
04-10	RP-1111	<i>The Impact of Wives' Earnings on Earnings Inequality Among Married-Couple Households in Malaysia</i> [in <u>Journal of Asian Economics</u> , Vol. 15, 2004, pp. 49-70.]	Shahina Amin Julie DaVanzo
04-09	RP-1142	<i>Trends in Socioeconomic Inequalities in Mortality in Developing Countries: The case of child survival in Sao Paulo, Brazil</i> , [in <u>Demography</u> , Vol. 41, No. 3, August 2004, pp. 443-464.]	Narayan Sastry
04-08	RP-1148	<i>Changes in American Opinion about Family Planning</i> [in <u>Studies in Family Planning</u> , Vol. 35, No. 3, September 2004, pp. 197-206.]	Clifford Grammich, Julie Davanzo and Kate Stewart
04-07	RP-1087	<i>Why Did the Welfare Rolls Fall During the 1990's? The Importance of Entry</i> [in <u>The American Economic Review (Papers and Proceedings)</u> , Vol. 93, No. 2, May 2003, pp. 288-292.]	Jeffrey Grogger, Steven J. Haider, and Jacob Alex Klerman
04-06	RP-1122	<i>Neighborhoods, Poverty, and Children's Well-being</i> [in <u>Social Inequality</u> , Chapter 3, Kathryn M. Neckerman, ed. Russell Sage Foundation: New York, 2004.]	Narayan Sastry
04-05	RP-1115	<i>Urbanization, development, and under-five mortality differentials by place of residence in Sao Paulo, Brazil, 1970-1991</i> , [in <u>Demographic Research: Special Collection 2</u> , Article 14, April 16, 2004, pp. 356-386.]	Narayan Sastry
04-04	RP-1094	<i>Assimilation across the Latino Generations</i> [in <u>American Economic Review</u> , Vol. 93, No. 2, May 2003, pp. 315-319.]	James P. Smith
04-03	RP-1104	<i>Early Origins of the Gradient: The Relationship Between Socioeconomic Status and Infant Mortality in the United States</i> [in <u>Demography</u> , Vol. 40, No. 4, November 2003, pp. 675-699.]	Brian Karl Finch
04-02	RP-1105	<i>An Investigation of Racial and Ethnic Disparities in Birthweight in Chicago Neighborhoods</i> [in <u>Demography</u> , Vol. 40, No. 4, November 2003, pp. 701-725.]	Narayan Sastry and Jon M. Hussey
04-01	RP-1102	<i>Economic downturns and schooling inequality, Cameroon, 1987-95</i> . [in <u>Population Studies</u> , Vol. 57, No. 2, 2003, pp. 183-197.]	Parfait M. Eloundou- Enyegue Julie DaVanzo

**2003**

<u>Series Number</u>	<u>Order Number</u>	<u>Title</u>	<u>Author</u>
03-11	RP-1089	<i>Trends and Projections in Income Replacement during Retirement</i> [in <u>Journal of Labor Economics</u> , Vol. 21, No. 4, pp. 755-781]	James P. Smith
03-10	RP-1079	<i>Enhancing the Quality of Data on Income: Recent Innovations from the HRS</i> [in <u>The Journal of Human Resources</u> , Vol. 38, No. 3, pp. 758-772]	Michael Hurd J. Thomas Juster James P. Smith
03-09	RP-1078	<i>Too Few Good Men: The Security Implications of Russian Demographics</i> [in <u>Georgetown Journal of International Affairs</u> , Summer/Fall 2003, pp. 17-26]	Julie DaVanzo Olga Oliker Clifford Grammich
03-08	RP-1080	<i>The Relationship Between The Economy and the Welfare Caseload: A Dynamic Approach</i> [in <u>Worker Well-being and Public Policy, Research in Labor Economics</u> , Vol. 22, 2003, pp. 39-69]	Steven J. Haider Jacob Alex Klerman Elizabeth Roth

03-07	RP-1066	<i>Economic Shocks, Wealth, and Welfare</i> [in <u>The Journal of Human Resources</u> , Vol. 38, No.2, pp.280-321]	Elizabeth Frankenberg James P. Smith Duncan Thomas
03-06	RP-1065	<i>Introduction to the JHR's Special Issue on Cross-National Comparative Research Using Panel Surveys</i> [in <u>The Journal of Human Resources</u> , Vol. 38, No.2, pp.231-240]	James P. Smith Frank Stafford James R. Walker
03-05	RP-1064	<i>Understanding Differences in Household Financial Wealth between the United States and Great Britain</i> [in <u>The Journal of Human Resources</u> , Vol. 38, No.2, pp.241-279]	James Banks Richard Blundell James P. Smith
03-04	RP-1061	<i>Remembrances of Things Past: Test-Retest Reliability of Retrospective Migration Histories</i> [in the <u>Journal of Royal Statistical Society</u> , A, 2003, Part 1, pp.23-49]	James P. Smith Duncan Thomas
03-03	RP-1057	<i>Regional Demographics and the War on Terrorism</i> [in <u>RUSI Journal</u> - The Royal United Services Institute for Defense Studies – February 2003, Vol. 148, No.1, pp. 22-29]	Brian Nichiporuk
03-02	RP-1056	<i>Can Patient Self-Management Help Explain the SES Health Gradient?</i> [in <u>Proceedings of the National Academy of Sciences</u> , Vol.99, No. 16, pp.10929-10934]	Dana P. Goldman James P. Smith
03-01	RP-1055	<i>Longer-term Effects of Head Start</i> [in <u>The American Economic Review</u> , Vol. 92, No. 4, 2002, pp. 999-1012]	Eliana Garces Duncan Thomas Janet Currie

## 2002

<u>Series Number</u>	<u>Order Number</u>	<u>Title</u>	<u>Author</u>
02-11	RP-1005	<i>Beyond Medi-Cal: Health Insurance Coverage among Former Welfare Recipients</i>	Carole Roan Gresenz Jacob Alex Klerman
02-10	RP-1014	<i>Social Environment, Life Challenge, and Health Among the Elderly in Taiwan</i> [in <u>Social Science &amp; Medicine</u> , Vol. 55, No. 2, 2002, pp. 191-209]	Megan Beckett Noreen Goldman Maxine Weinstein I-fen Lin Yi-li Chuang
02-09	RP-1016	<i>Nonmarital Childbearing: Influences of Education, Marriage, and Fertility</i> [in <u>Demography</u> , Vol. 38, No. 2, 2002, pp. 311-329]	Dawn M. Upchurch Lee A. Lillard Constantijn W.A. Panis
02-08	RP-1013	<i>On the Back of Blacks? Immigrants and the Fortunes of African Americans</i> [in <u>Strangers at the Gates: New Immigrants in Urban America</u> , 2001, pp. 186-227]	Nelson Lim
02-07	RP-1007	<i>Medi-Cal After Welfare Reform: Enrollment Among Former Welfare Recipients</i> [in <u>Medi-Cal Policy Institute, Issue Brief Number 4</u> , 2001, pp. 1-12]	Amy G. Cox Jacob Alex Klerman Ingrid Aguirre Happoldt
02-06	RP-995 (part 1)	<i>Using Quantitative &amp; Qualitative Research Methodologies for Understanding Infant Feeding Practices (Chapter 2)</i> [in <u>Nutrition and Child Health in Cameroon</u> , Barthélémy Kuate-Defo (ed.), 2001, pp. 53-78]	Barthélémy Kuate-Defo Julie DaVanzo Joanne Leslie
02-05	RP-995 (part 2)	<i>Infant Feeding and Weaning Practices in the North-West and South-West Provinces of Cameroon: Evidence from Focus Group Discussions (Chapter 13)</i> [in <u>Nutrition and Child Health in Cameroon</u> , Barthélémy Kuate-Defo (ed.), 2001, pp. 247-266]	Barthélémy Kuate-Defo Martina Baye Roger Seukap Joanne Leslie Julie DaVanzo Narayan Sastry
02-05	RP-998	<i>Forest Fires, Air Pollution, and Mortality in Southeast Asia</i> [in <u>Demography</u> , Vol. 39, No. 1, 2001, pp. 1-23]	
02-04	RP-994	<i>Anticipated and Actual Bequests</i> [in <u>Themes in the Economics of Aging</u> , David A. Wise (ed.), 2001, pp. 357-391]	Michael D. Hurd James P. Smith
02-03	RP-1000	<i>Mortality and Sample Selection: Reply to Noymer</i> [in <u>Journal of Health &amp; Social Behavior</u> , Vol. 42, No. 3, 2001, pp. 328-331]	Megan K. Beckett Marc N. Elliott
02-02	RP-993	<i>Do Better Family Planning Services Reduce Abortion in Bangladesh?</i> [in <u>The Lancet</u> , Vol. 358, No. 9287, 2001, pp. 1051-1056]	Mizanur Rahman Julie DaVanzo Abdur Razzaque

## 2001

<u>Series Number</u>	<u>Order Number</u>	<u>Title</u>	<u>Author</u>
01-08	RP-965	<i>Lost but Not Forgotten: Attrition in the Indonesian Family Life Survey</i> [In <u>Journal of Human Resources</u> , Vol. 36, No. 3, 2001, pp. 556-592]	Duncan Thomas Elizabeth Frankenberg James P. Smith
01-07	RP-964	<i>Bargaining Power Within Couples and Use of Prenatal and Delivery Care in Indonesia</i> [In <u>Studies in Family Planning</u> , Vol. 32, No. 2, June 2001, pp. 130-146]	Kathleen Beegle Elizabeth Frankenberg Duncan Thomas
01-06	RP-966	<i>Comments on: Explaining Recent Declines in Food Stamp Program Participation</i> [In <u>Brookings – Wharton Papers on Urban Affairs 2001</u> , W.G. Gale and J.R. Pack (eds.), 2001, pp. 236-241]	Robert F. Schoeni
01-05	RP-956	<i>The Quality of Retrospective Data: An Examination of Long-Term Recall in a Developing Country</i> [In <u>The Journal of Human Resources</u> , Vol.36, No.3, 2001, pp. 593-625]	Megan Beckett Julie DeVanzo Narayan Sastry Constantijn Panis Christine Peterson
01-04	RP-953	<i>Why Is Wealth Inequality Rising?</i> [In <u>The Causes and Consequences of Increasing Inequality</u> , Finis Welch (ed), 2001, pp. 83-115]	James P. Smith
01-03	RP-945	<i>Commentary: Methodological Biases in Estimating the Burden of Out-of-Pocket Expenses</i> [In <u>Health Services Research</u> , Vol. 35(6), 2001, pp. 1357-1365]	Dana P. Goldman James P. Smith
01-02	RP-936	<i>Race and Ethnicity in the Labor Market: Trends Over the Short and Long Term</i> [In <u>America Becoming: Racial Trends and Their Consequences</u> , Vol. II, Neil J. Smelser, et al. (eds), 2001, pp. 52-97]	James P. Smith
01-01	RP-923	<i>The Importance of International Demographic Research for the United States</i> [In <u>Population Research and Policy Review</u> , Vol. 19, 2000, pp. 199-232]	Narayan Sastry

## 2000

<u>Series Number</u>	<u>Order Number</u>	<u>Title</u>	<u>Author</u>
00-08	RP-924	<i>Forecasting Enrollments for Immigrant Entry-port School Districts</i> [In <u>Demography</u> , Vol. 37, No. 4, November 2000, pp. 499-510]	Peter A. Morrison
00-07	RP-916	<i>Trends in Long-run Versus Cross-section Earnings Inequality in the 1970s and 1980s</i> [In <u>Review of Income and Wealth</u> , Series 44, No. 2, June 1998, pp. 199-213]	Jeremy Arkes
00-06	RP-884	<i>Converging Health Inequalities in Later Life—an Artifact of Mortality Selection?</i> [In <u>Journal of Health and Social Behavior</u> , Vol. 41, March 2000, pp. 106-119]	Megan Beckett
00-05	RP-882	<i>Do Health Interview Surveys Yield Reliable Data on Chronic Illness Among Older Respondents</i> [In <u>Journal of Epidemiology</u> , Vol. 151, No. 3, 2000, pp. 315–323]	Megan Beckett Maxine Weinstein Noreen Goldman Lin Yu-Hsuan
00-04	RP-891	<i>Wives' Earnings and the Level and Distribution of Married Couples' Earnings in Developed Countries</i> [In <u>Journal of Income Distribution</u> , Vol. 8, No. 1, 1998, pp. 45-61]	Maria Cancian Robert F. Schoeni
00-03	RP-881	<i>Does Head Start Help Hispanic Children?</i> [In <u>Journal of Public Economics</u> , Vol. 74, No. 2, 1999, pp. 235-262]	Janet Currie Duncan Thomas
00-02	RP-804	<i>Job Continuity Among New Mothers</i> [In <u>Demography</u> , Vol. 36, No. 2, May 1999, pp. 145-155]	Jacob Alex Klerman Arleen Leibowitz
00-01	RP 887	<i>The Role of Education in Explaining and Forecasting Trends in Functional Limitations Among Older Americans</i> [In <u>Demography</u> , Vol. 36, No. 4, November 1999, pp. 461-473]	Vicki A. Freedman Linda G. Martin