



## EUROPE

CHILDREN AND FAMILIES  
EDUCATION AND THE ARTS  
ENERGY AND ENVIRONMENT  
HEALTH AND HEALTH CARE  
INFRASTRUCTURE AND  
TRANSPORTATION  
INTERNATIONAL AFFAIRS  
LAW AND BUSINESS  
NATIONAL SECURITY  
POPULATION AND AGING  
PUBLIC SAFETY  
SCIENCE AND TECHNOLOGY  
TERRORISM AND  
HOMELAND SECURITY

The RAND Corporation is a nonprofit institution that helps improve policy and decisionmaking through research and analysis.

This electronic document was made available from [www.rand.org](http://www.rand.org) as a public service of the RAND Corporation.

Skip all front matter: [Jump to Page 1](#) ▼

### Support RAND

[Browse Reports & Bookstore](#)

[Make a charitable contribution](#)

### For More Information

Visit RAND at [www.rand.org](http://www.rand.org)

Explore [RAND Europe](#)

View [document details](#)

### Limited Electronic Distribution Rights

This document and trademark(s) contained herein are protected by law as indicated in a notice appearing later in this work. This electronic representation of RAND intellectual property is provided for non-commercial use only. Unauthorized posting of RAND electronic documents to a non-RAND Web site is prohibited. RAND electronic documents are protected under copyright law. Permission is required from RAND to reproduce, or reuse in another form, any of our research documents for commercial use. For information on reprint and linking permissions, please see [RAND Permissions](#).

This report is part of the RAND Corporation research report series. RAND reports present research findings and objective analysis that address the challenges facing the public and private sectors. All RAND reports undergo rigorous peer review to ensure high standards for research quality and objectivity.

# Mapping Diasporas in the European Union and United States

Appendix 2: Diaspora characteristics - level and  
exposure by receiving countries

Jirka Taylor, Jennifer Rubin, Corrado Giulietti, Chris Giacomantonio, Flavia Tsang, Amelie Constant, Linguere Mbaye, Maryam Naghsh Nejad, Kristy Kruithof, Mafalda Pardal, Alex Hull, Tess Hellgren

For more information on this publication, visit [www.rand.org/rr671](http://www.rand.org/rr671)

Published by the RAND Corporation, Santa Monica, Calif., and Cambridge, UK

© European Union, 2014

Reproduction is authorised provided the source is acknowledged.

RAND Europe is an independent, not-for-profit policy research organisation that aims to improve policy and decisionmaking in the public interest through research and analysis. RAND's publications do not necessarily reflect the opinions of its research clients and sponsors.

**RAND**® is a registered trademark.

#### Support RAND

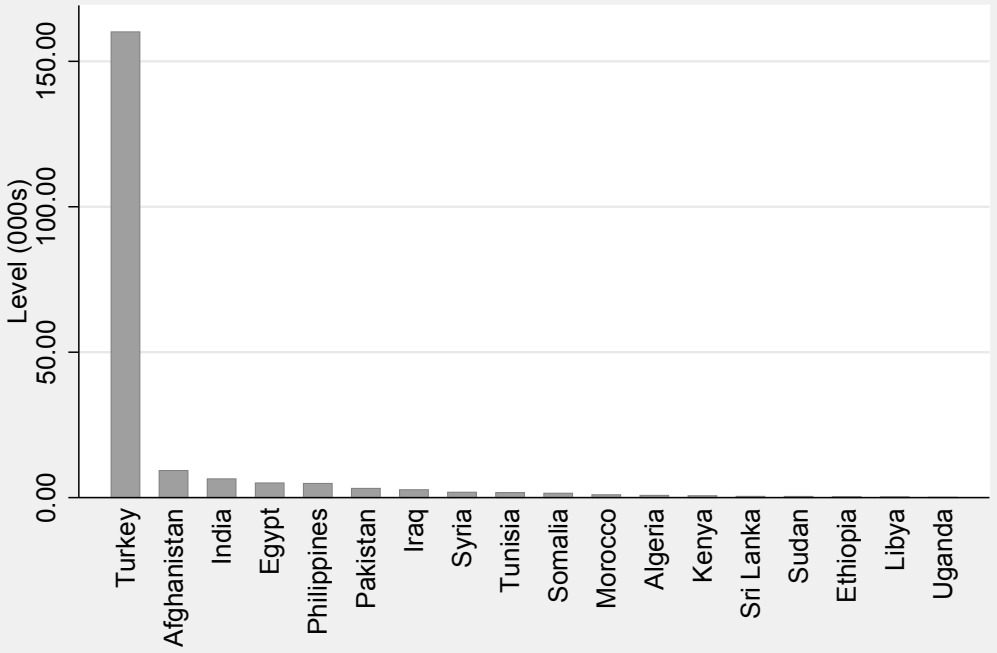
Make a tax-deductible charitable contribution at  
[www.rand.org/giving/contribute](http://www.rand.org/giving/contribute)

[www.rand.org](http://www.rand.org)  
[www.rand.org/randeurope](http://www.rand.org/randeurope)

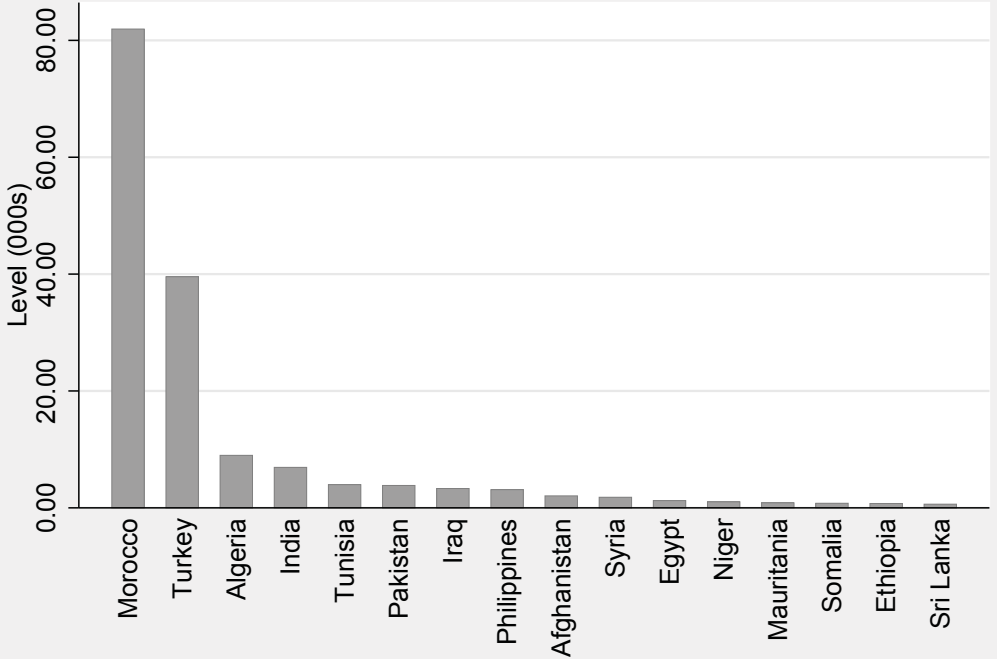
Diaspora characteristics - level and exposure by receiving countries

Level

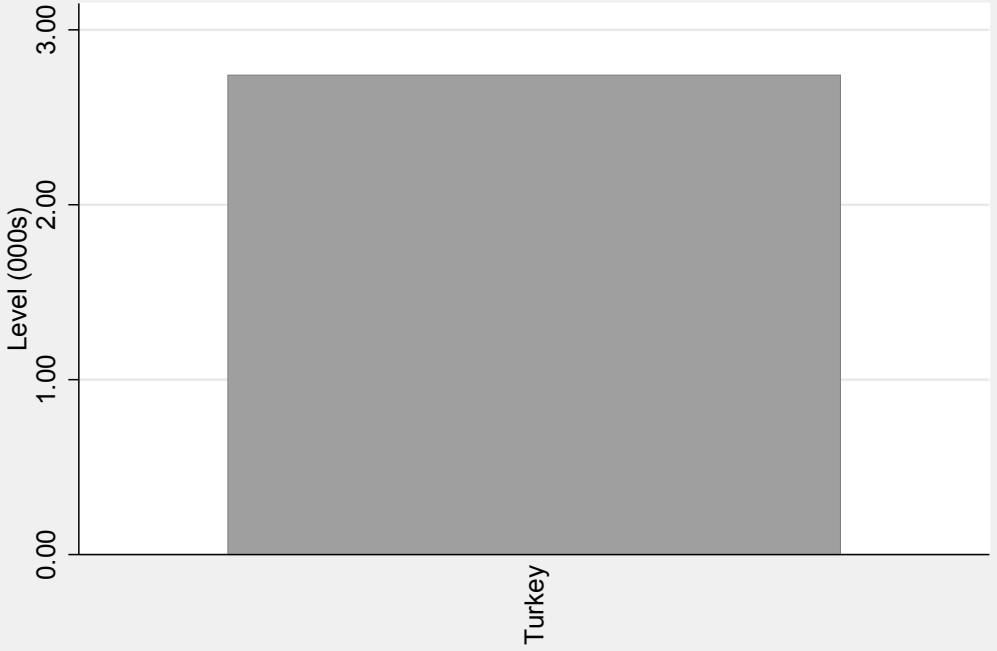
## Austria



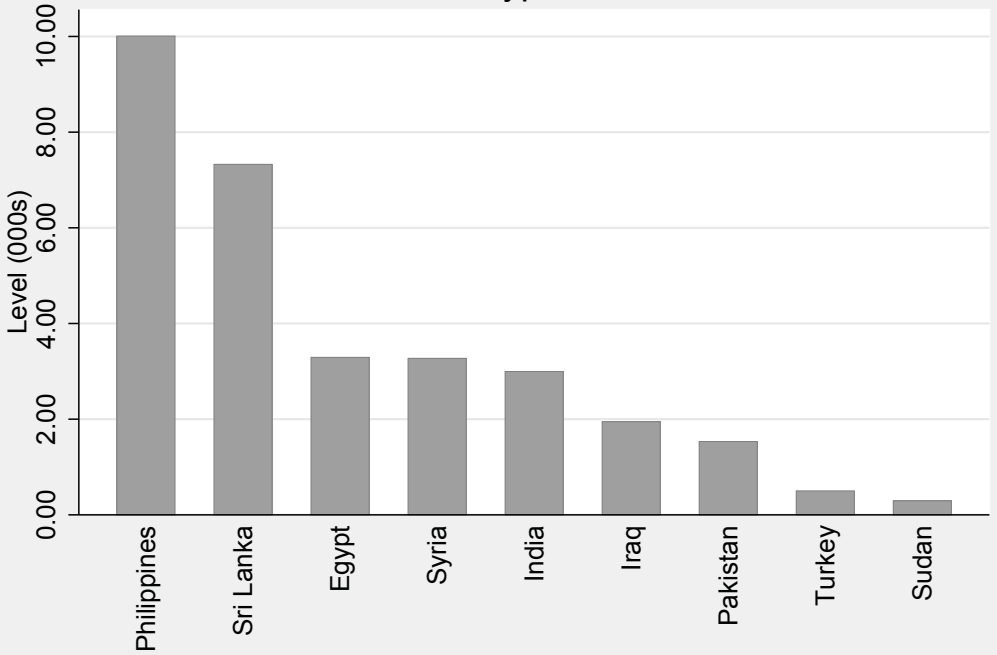
## Belgium



## Bulgaria

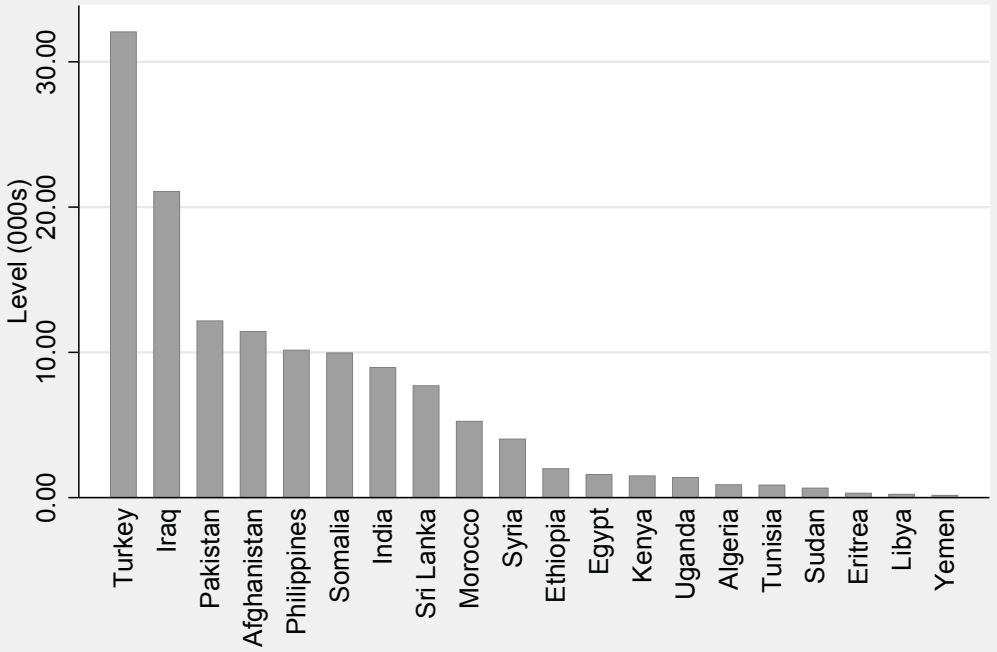


## Cyprus

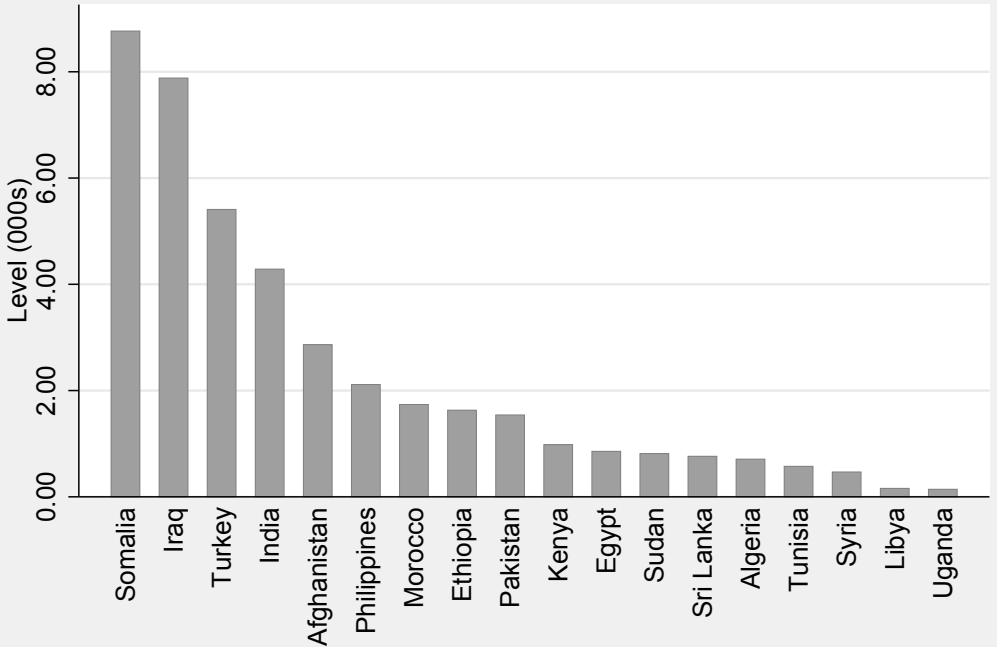




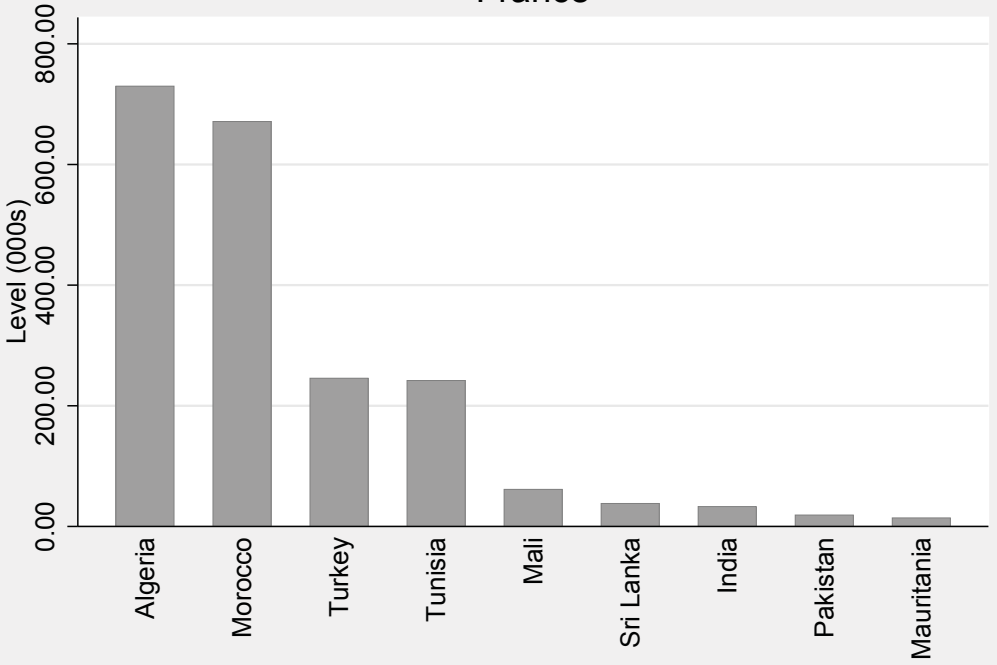
## Denmark



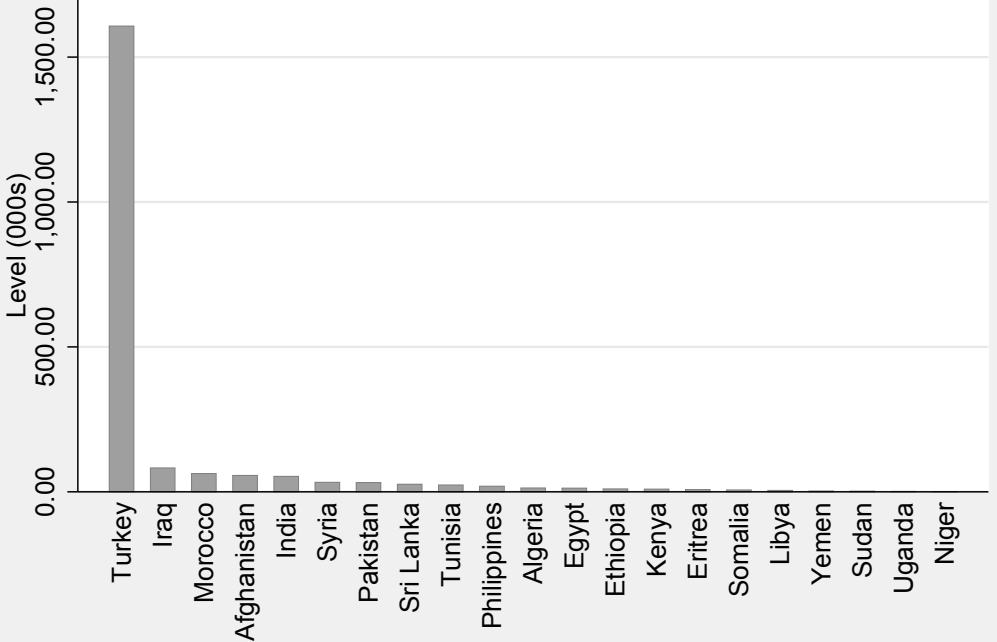
## Finland



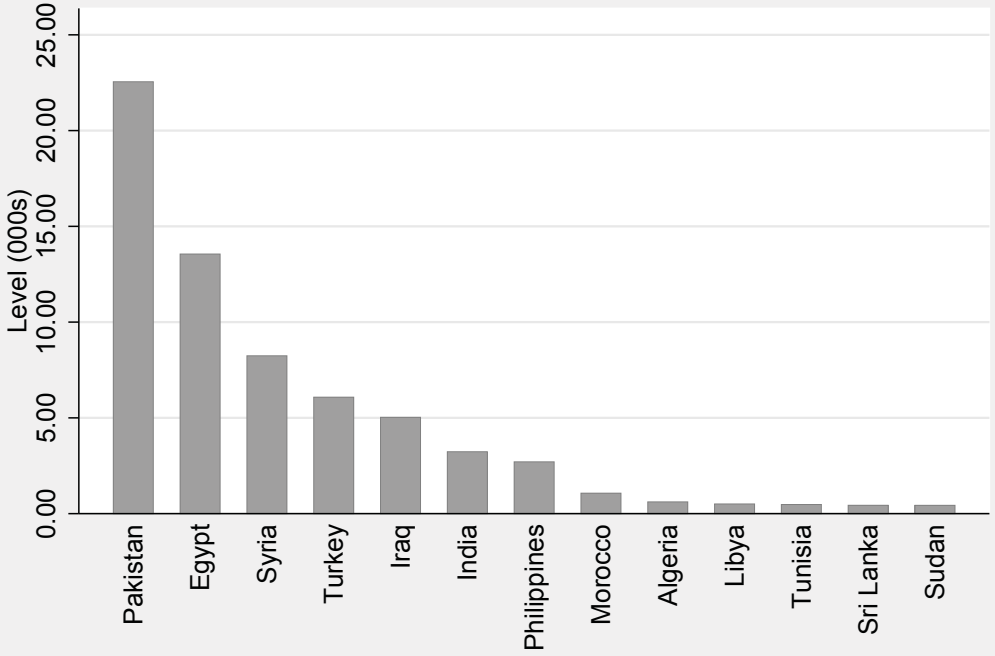
## France



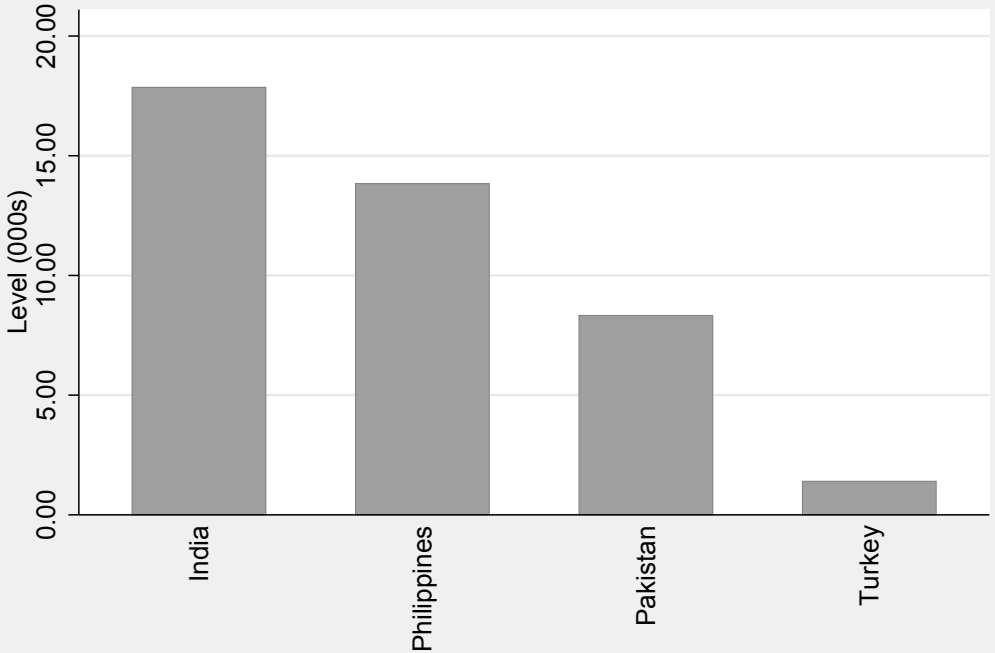
## Germany



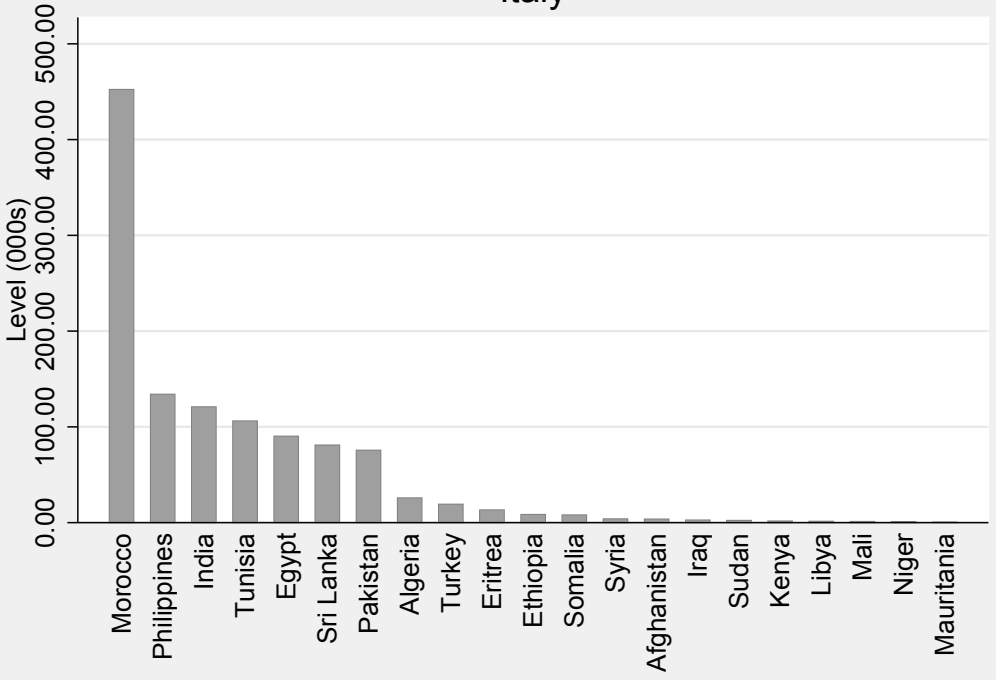
## Greece



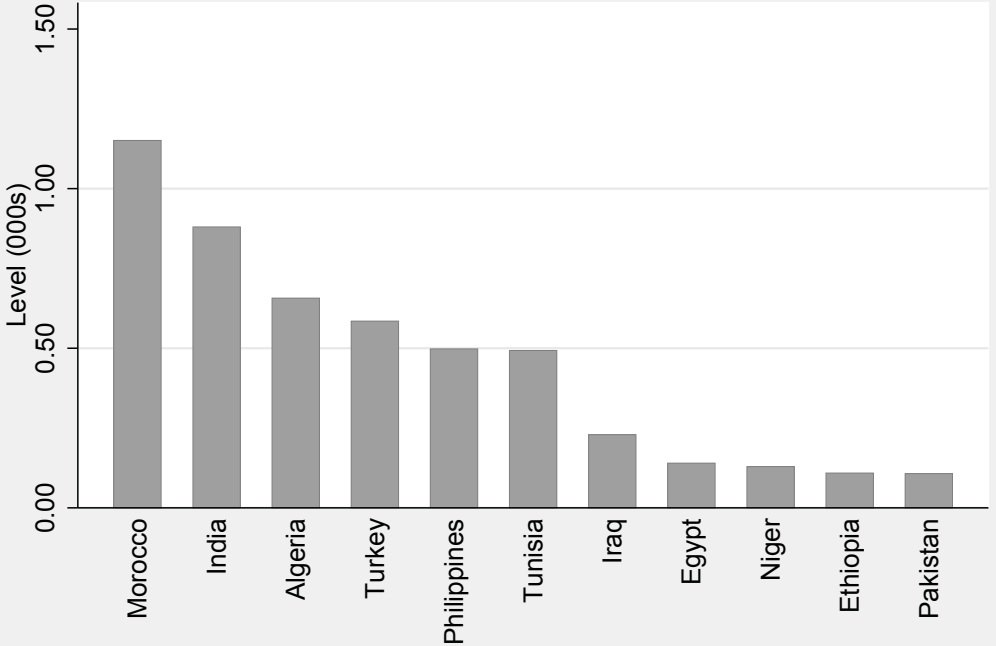
## Ireland



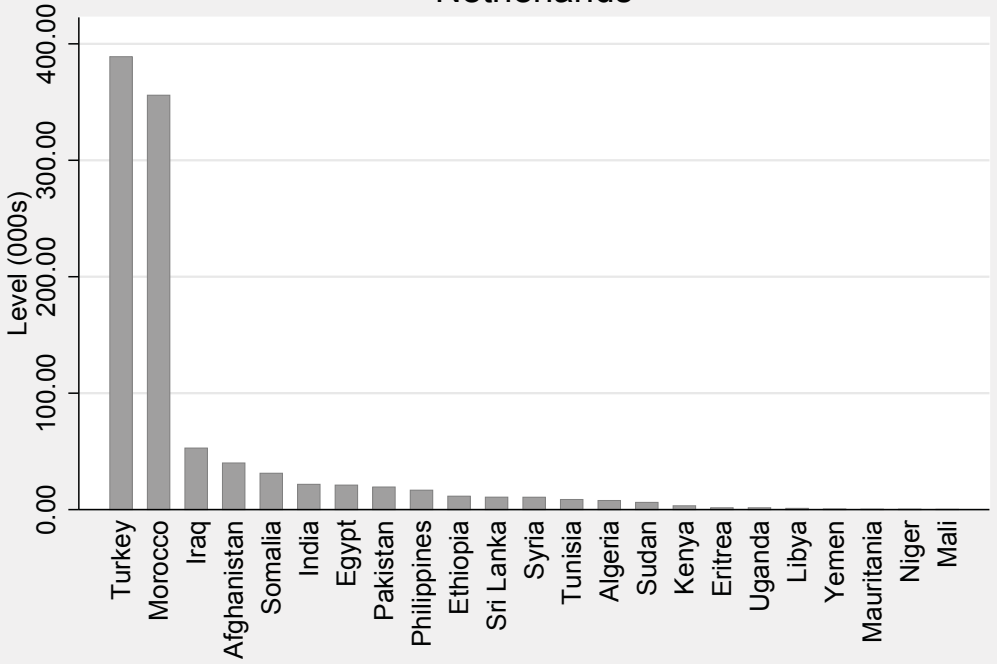
## Italy



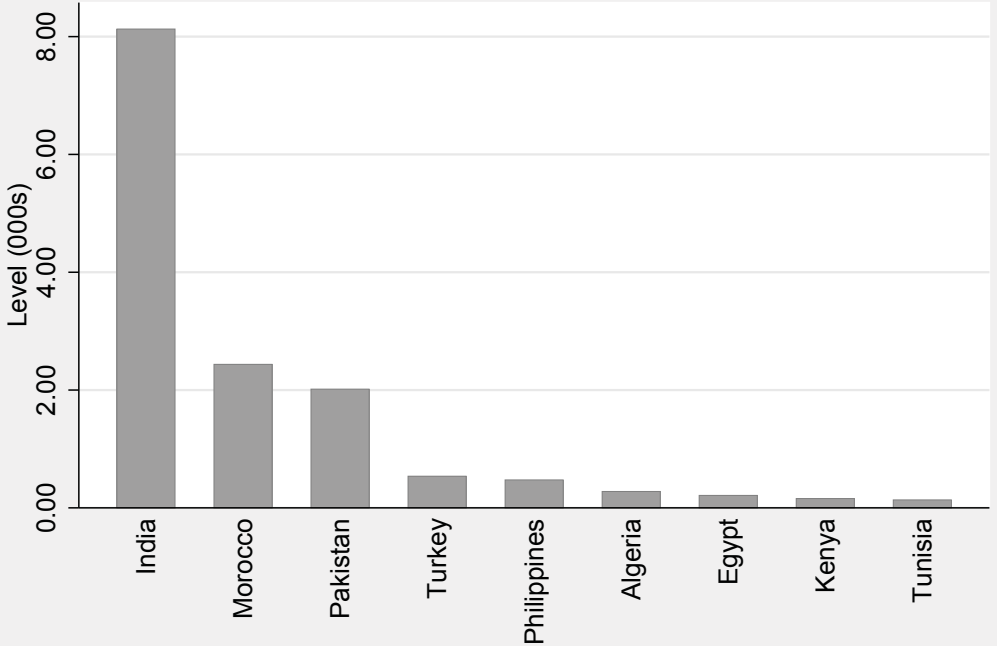
## Luxembourg



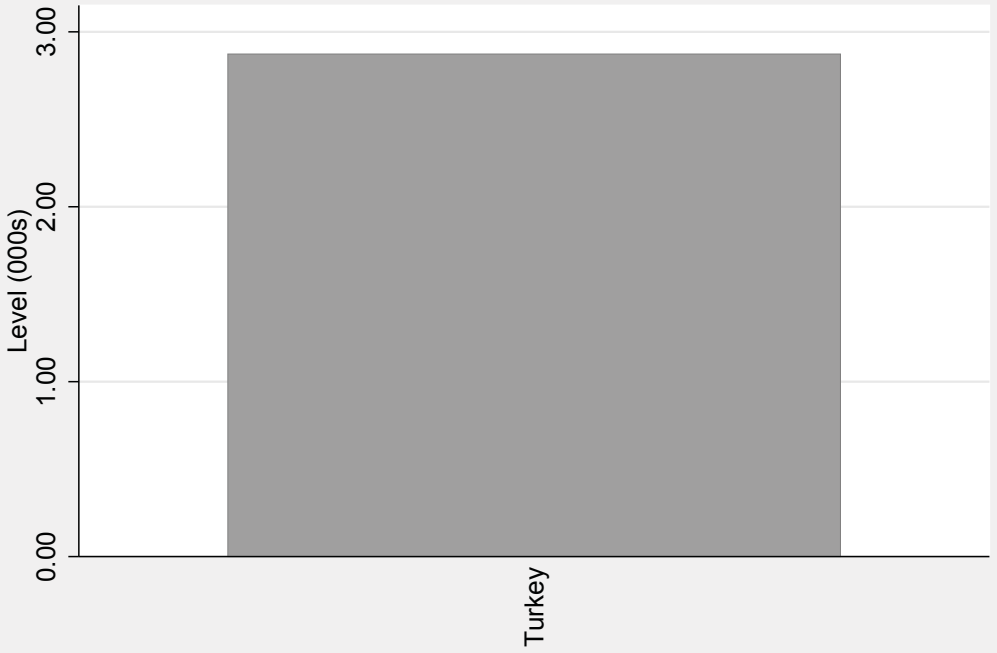
## Netherlands



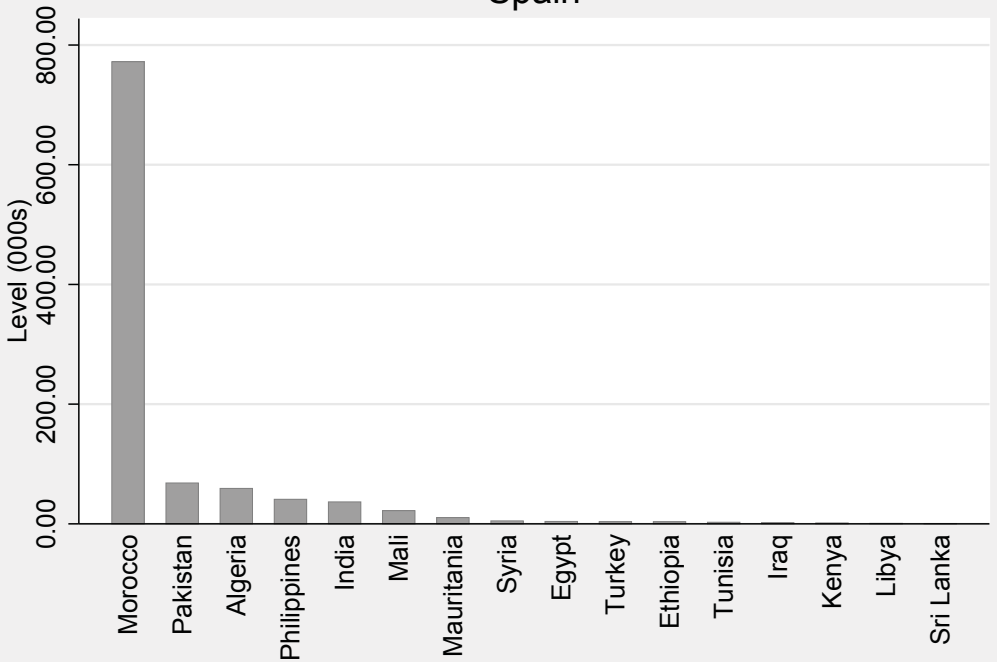
## Portugal



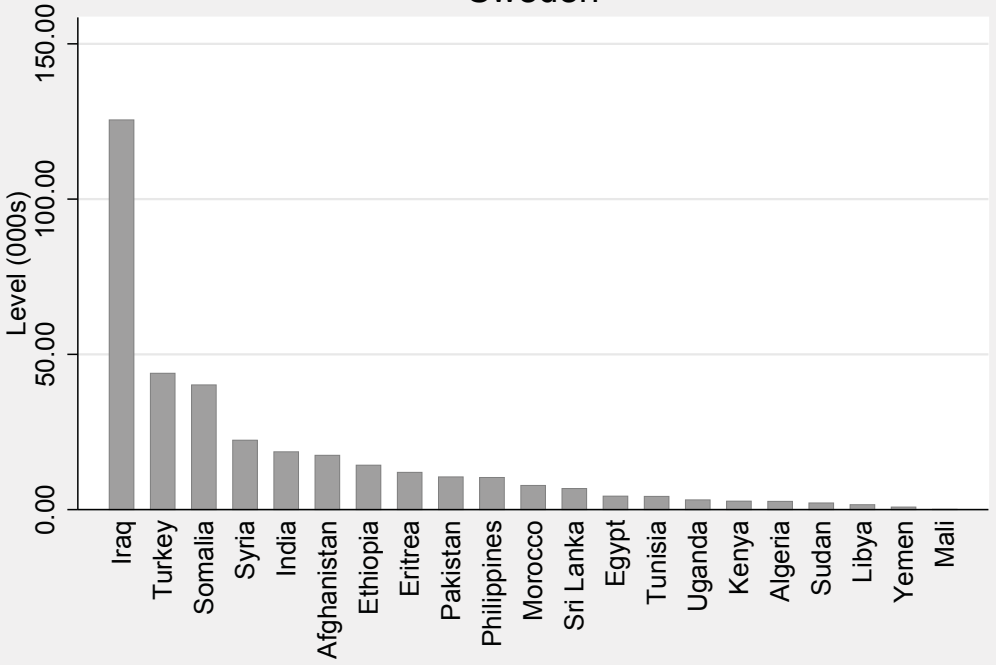
## Romania



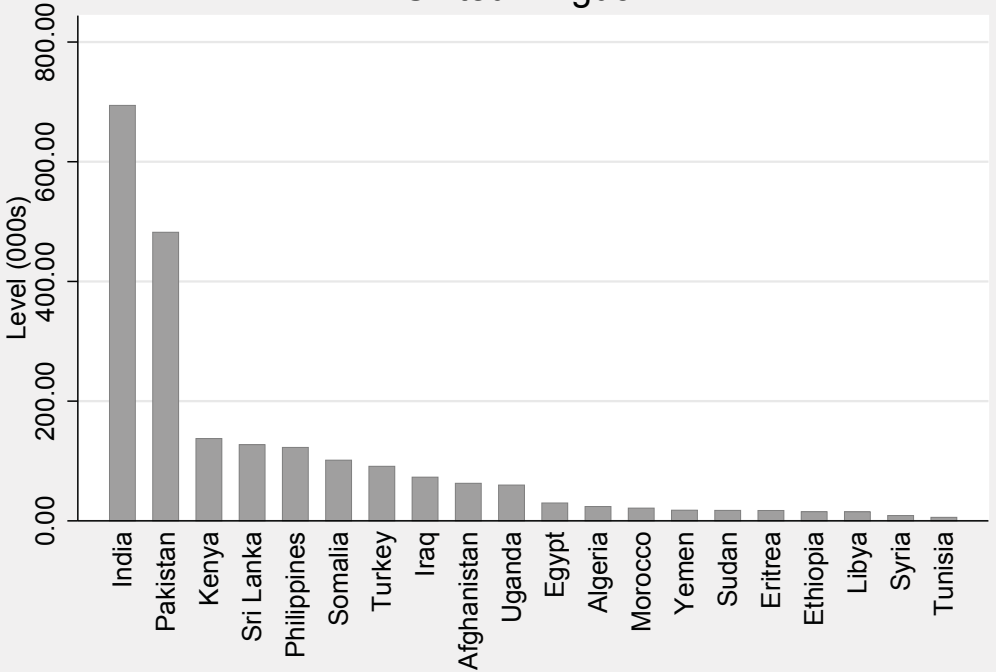
## Spain



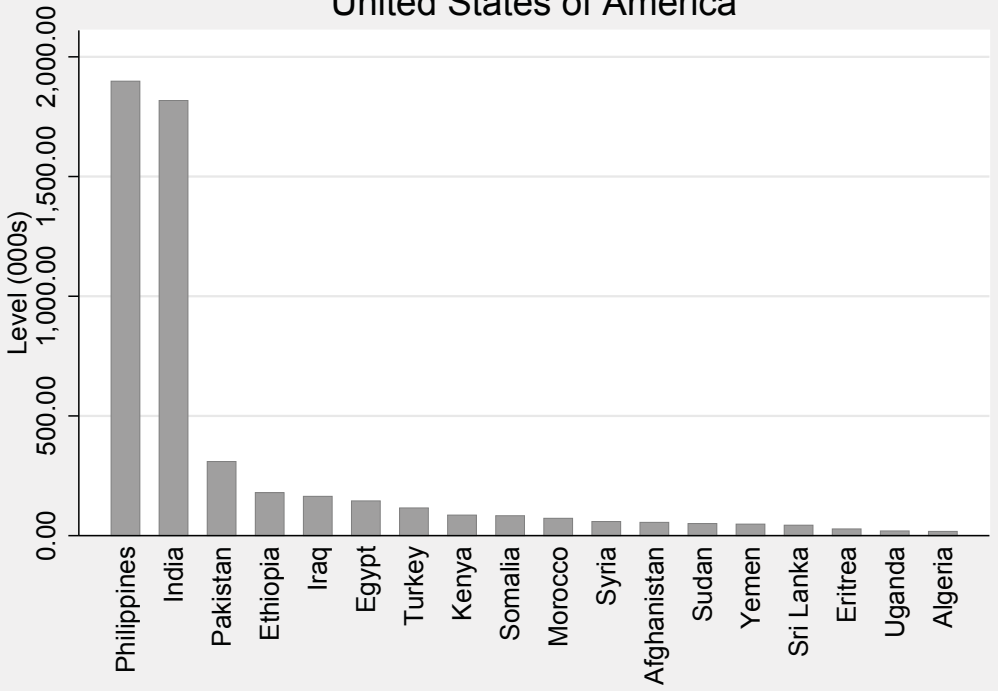
## Sweden



## United Kingdom



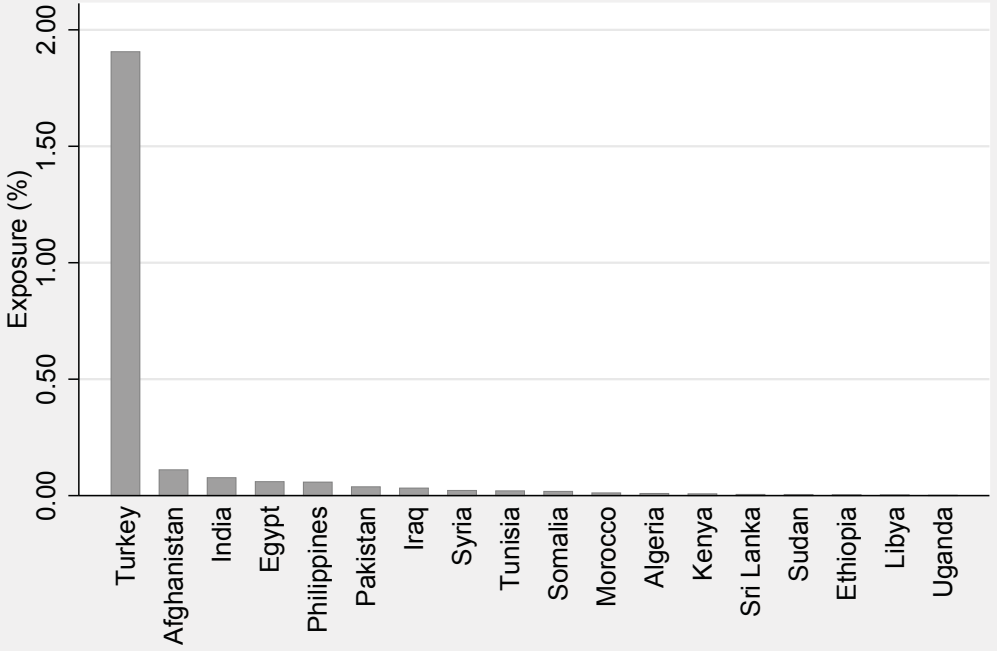
# United States of America



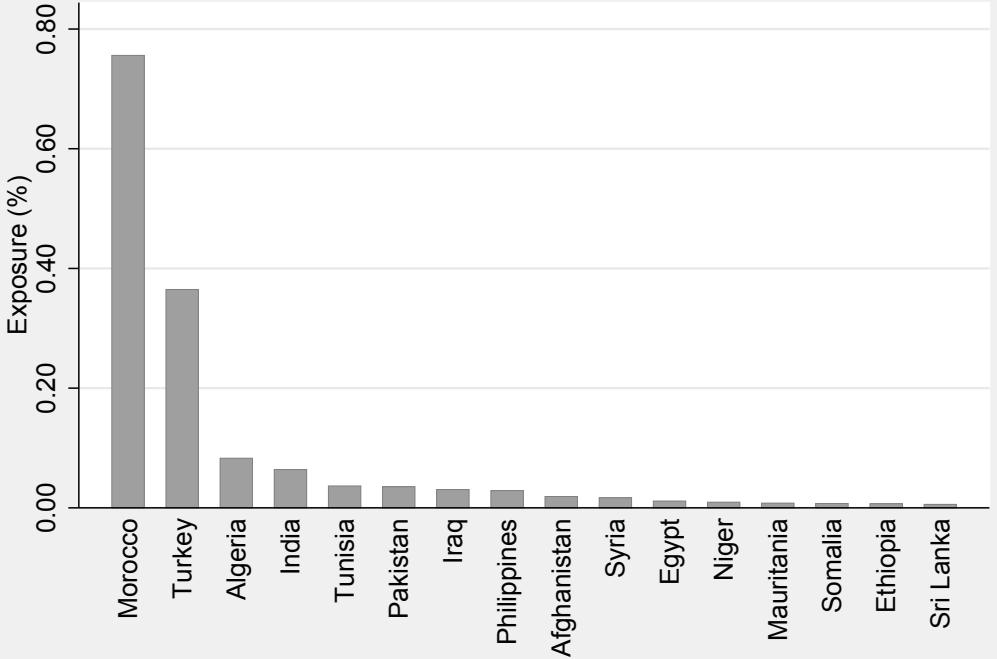


Exposure

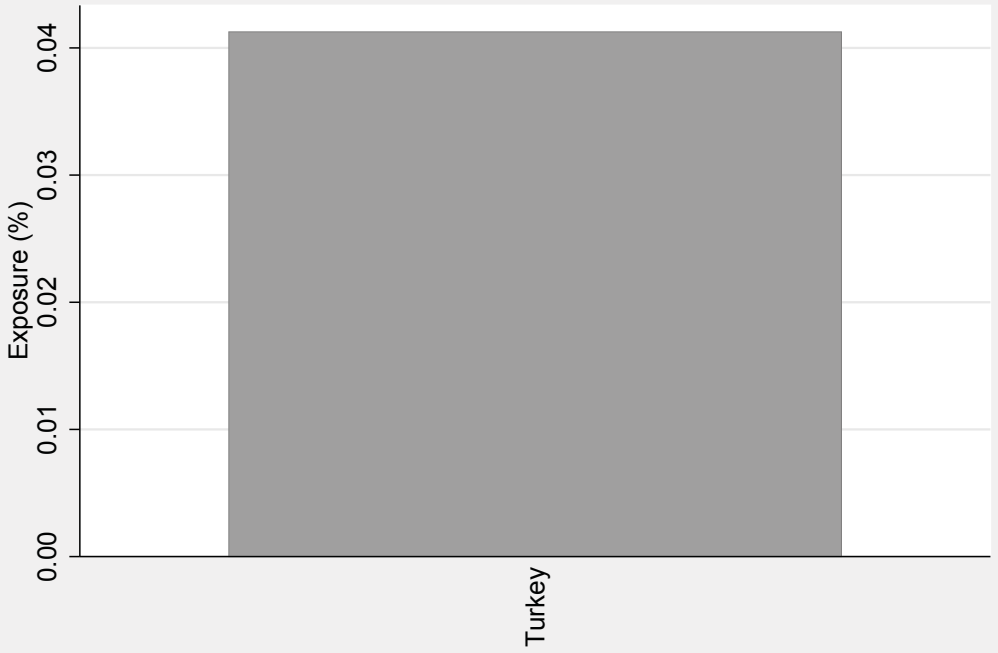
## Austria



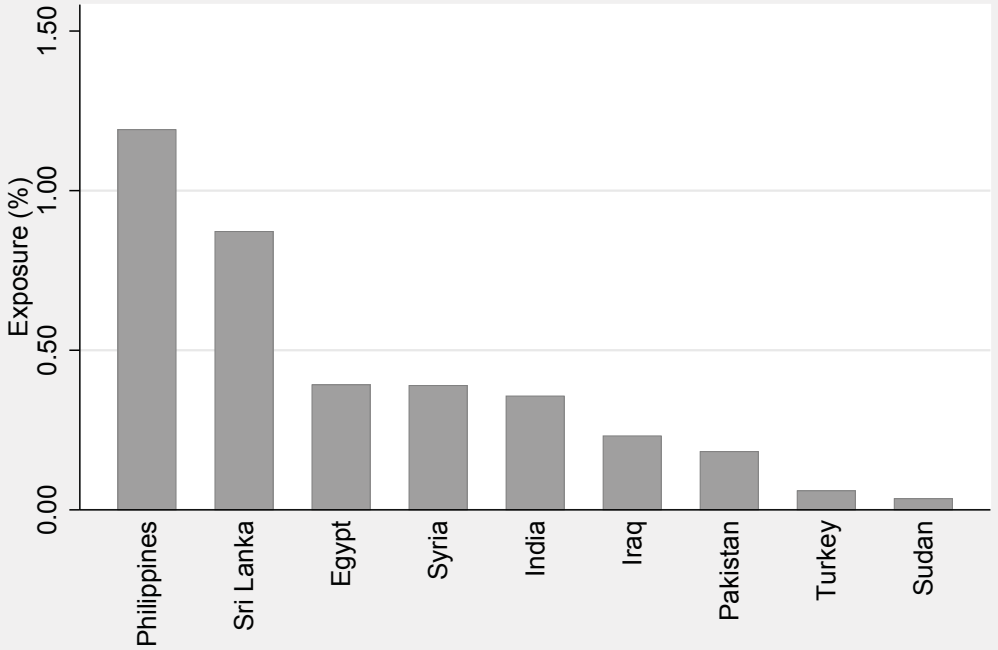
## Belgium



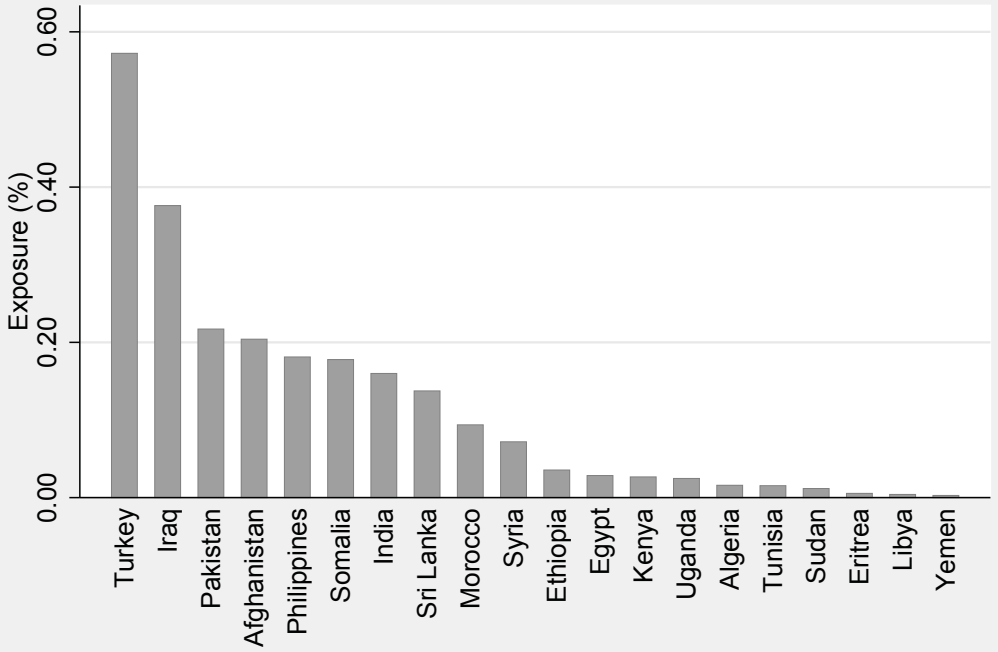
## Bulgaria



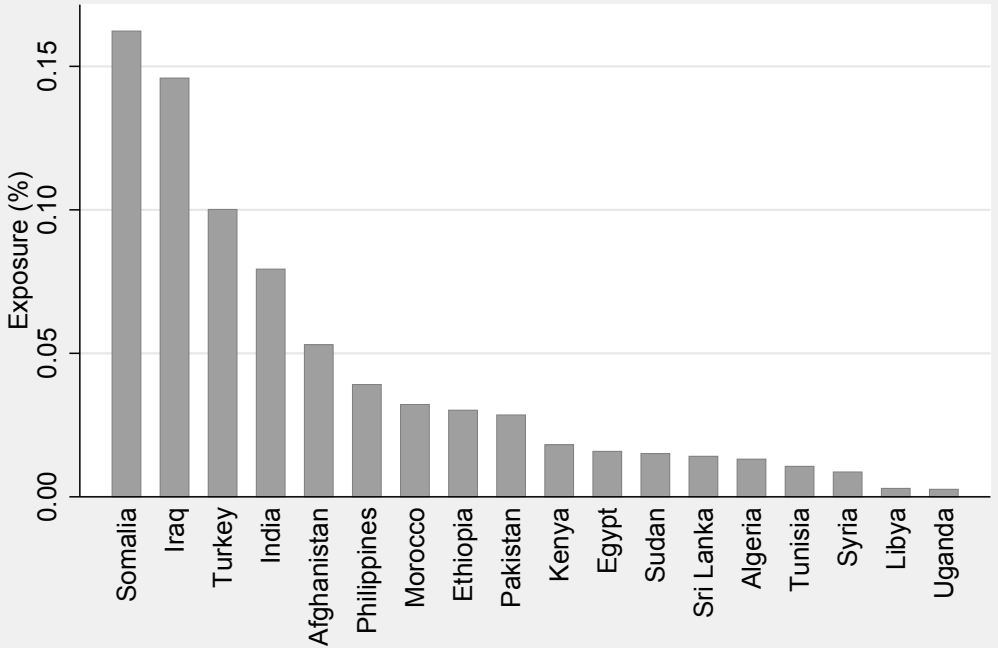
## Cyprus



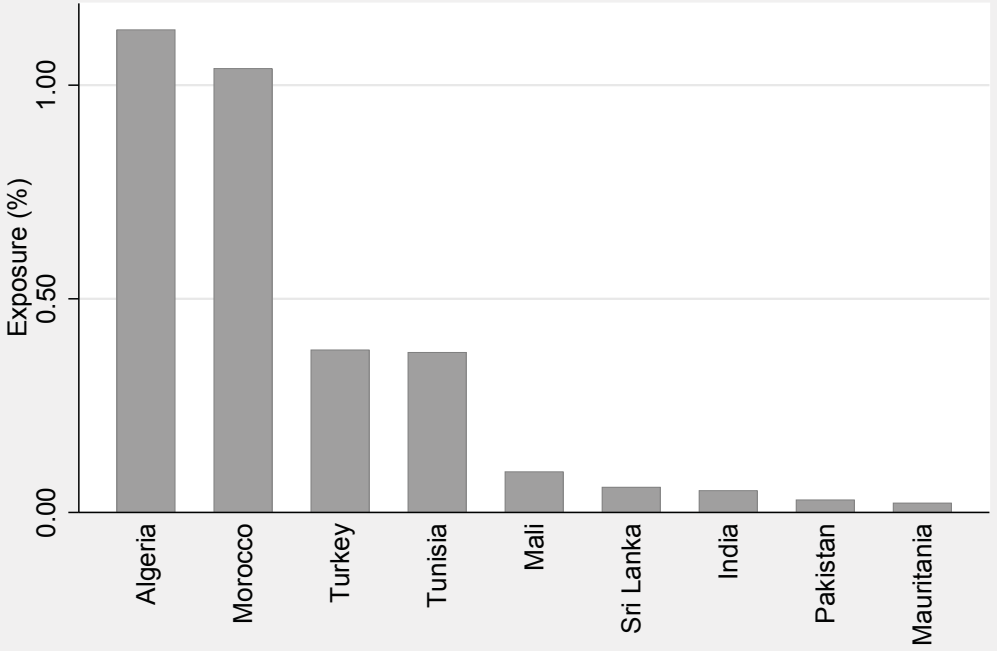
## Denmark



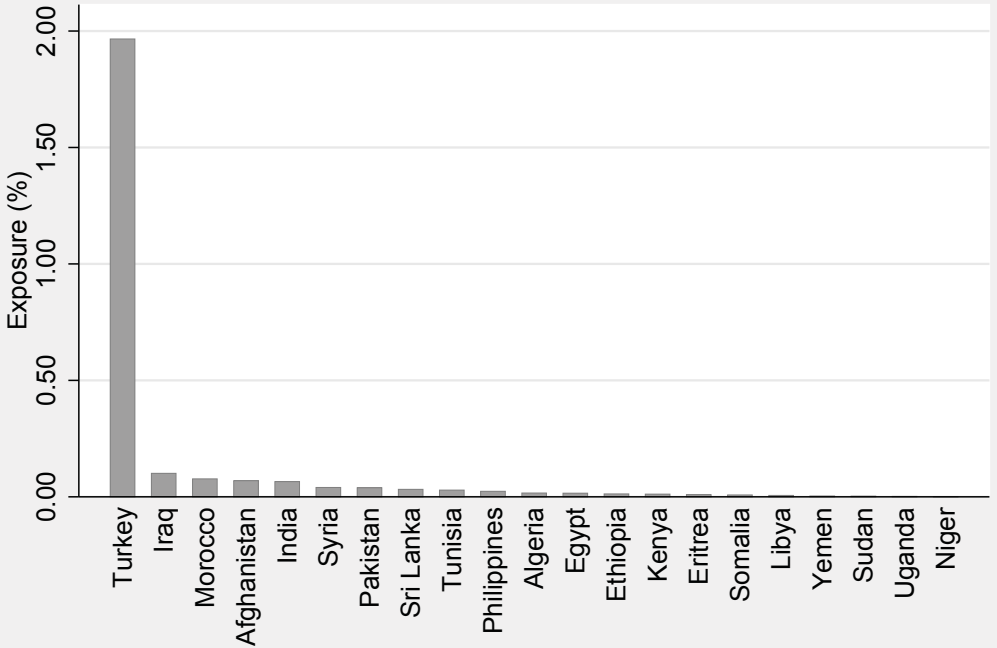
## Finland



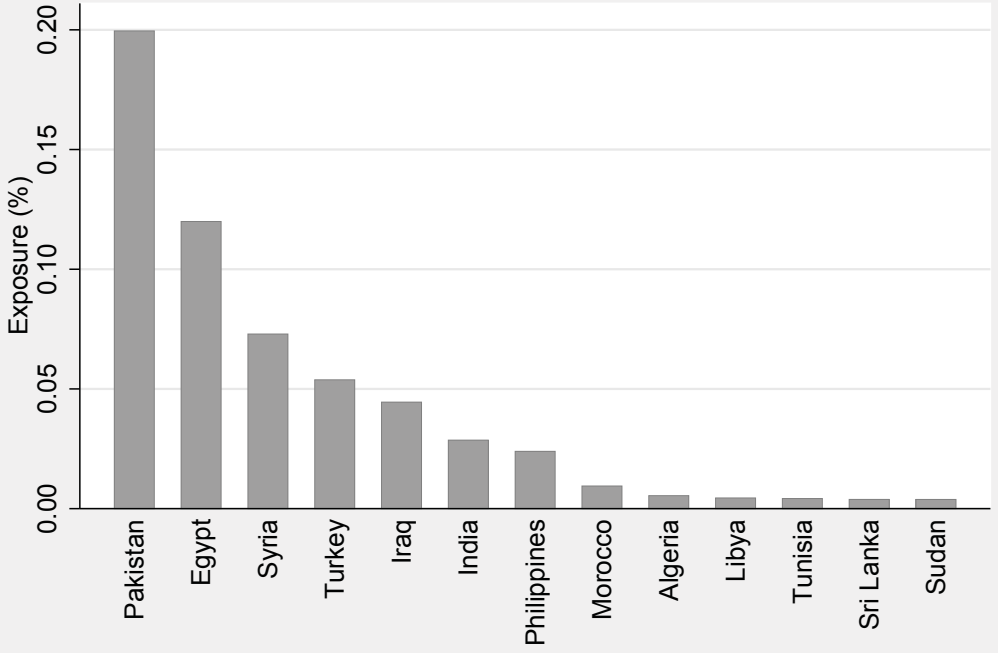
## France



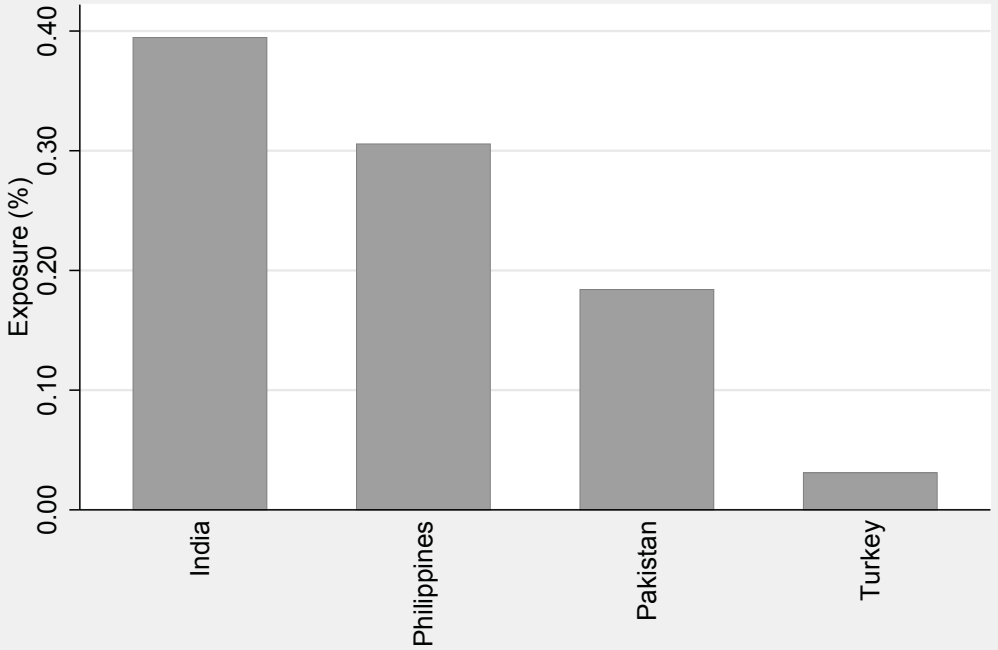
## Germany



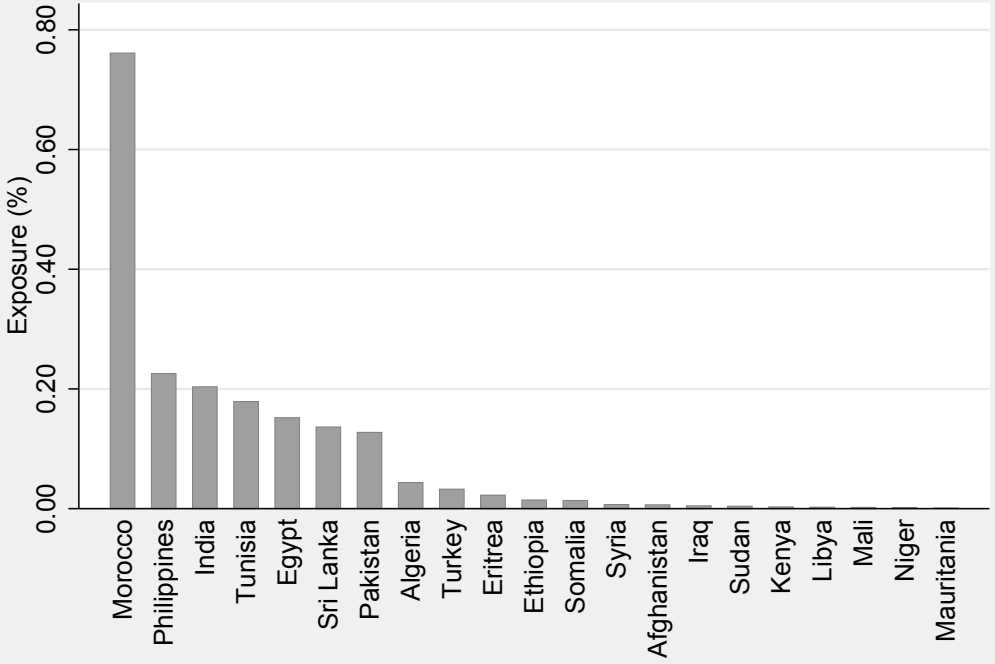
## Greece



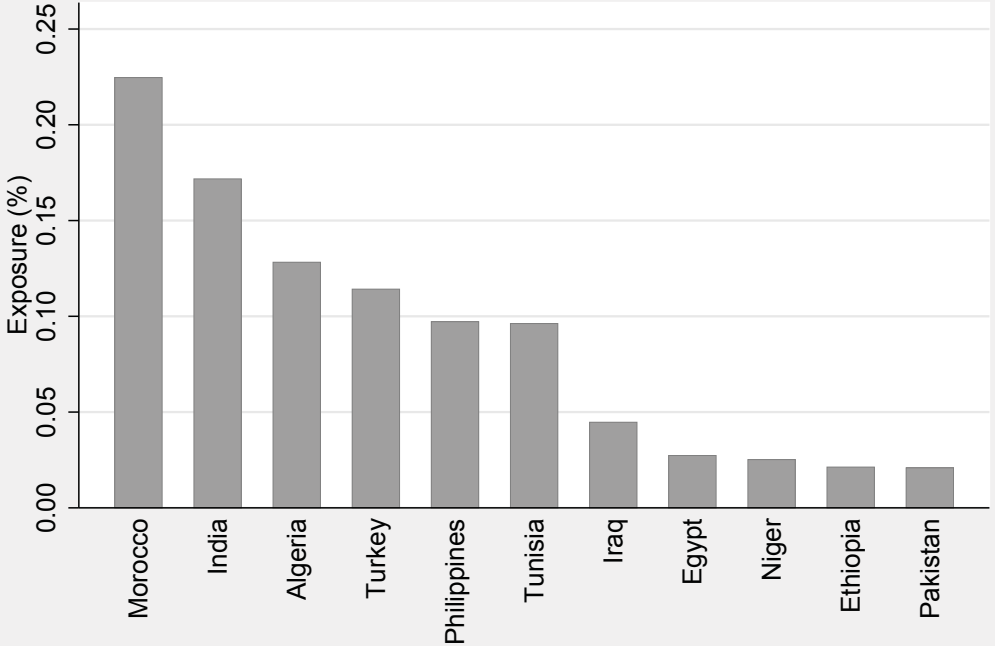
## Ireland



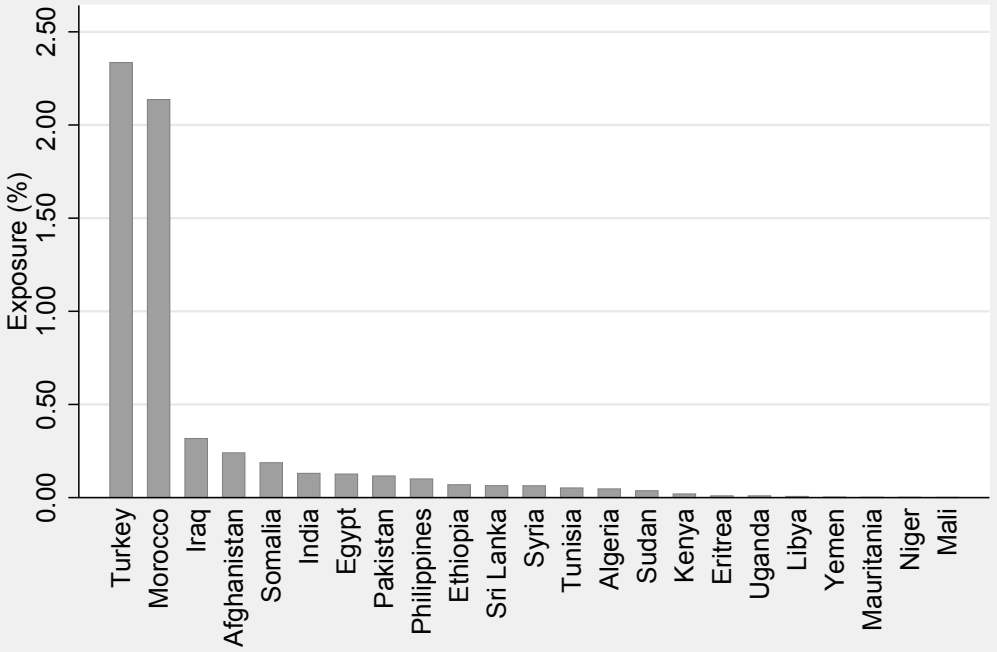
## Italy



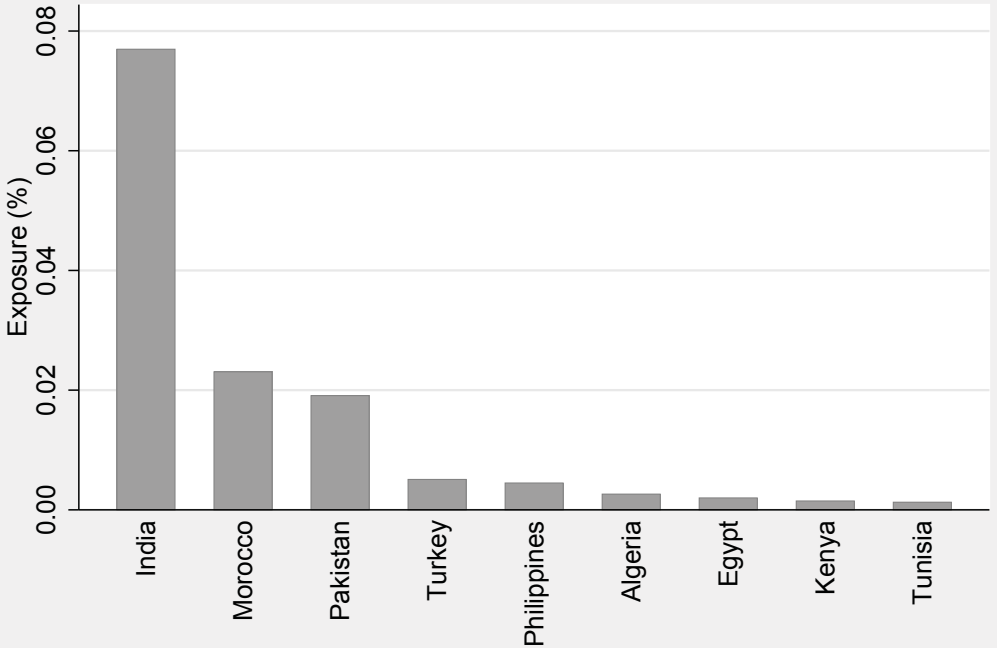
## Luxembourg



## Netherlands

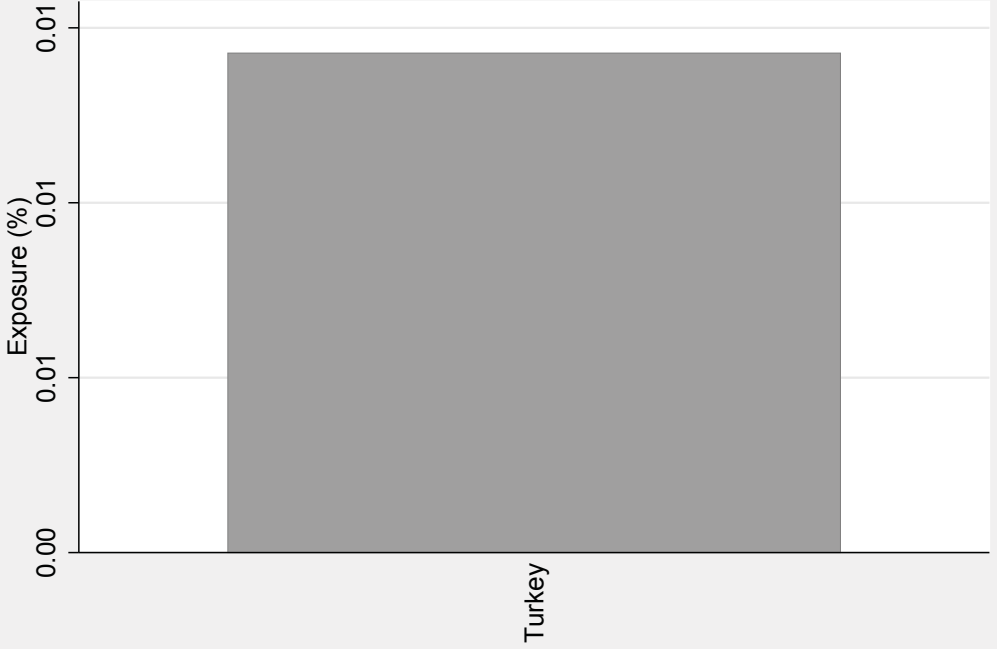


## Portugal

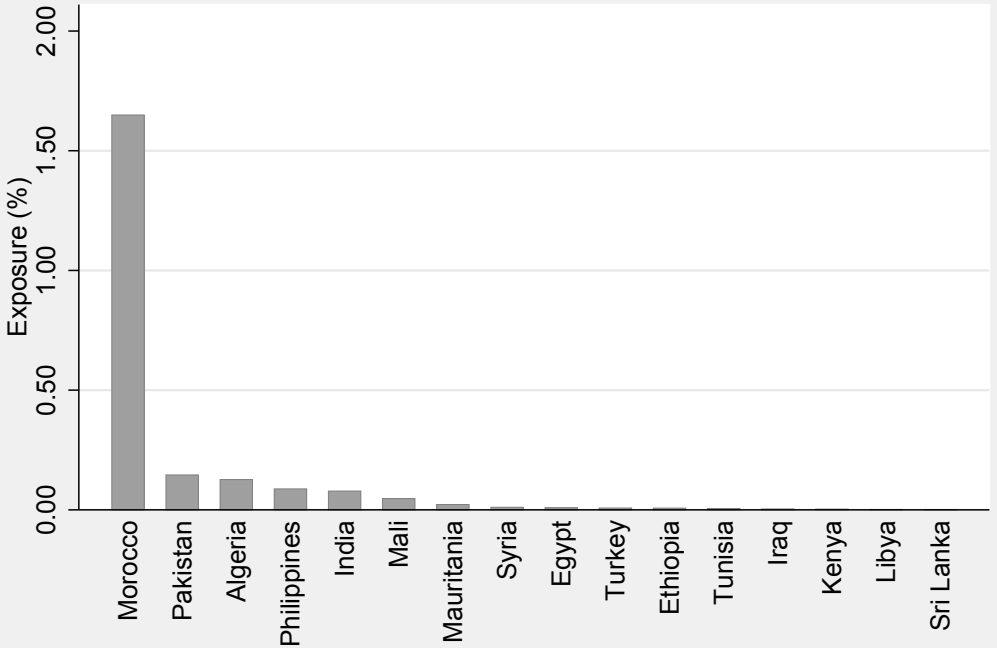




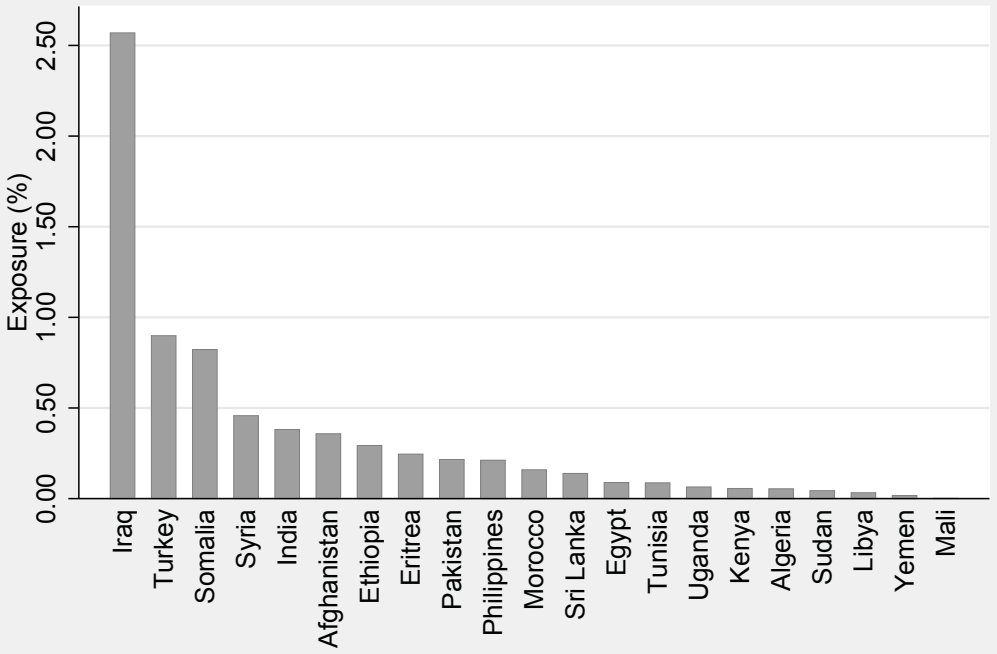
## Romania



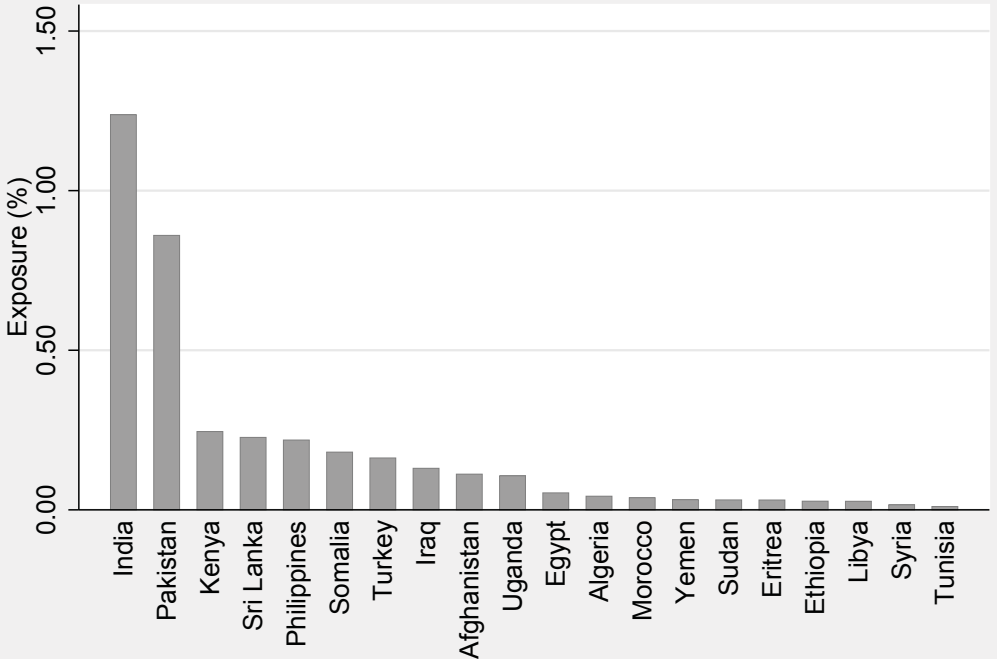
## Spain



## Sweden



## United Kingdom



# United States of America

